

## Product datasheet for **TA328353**

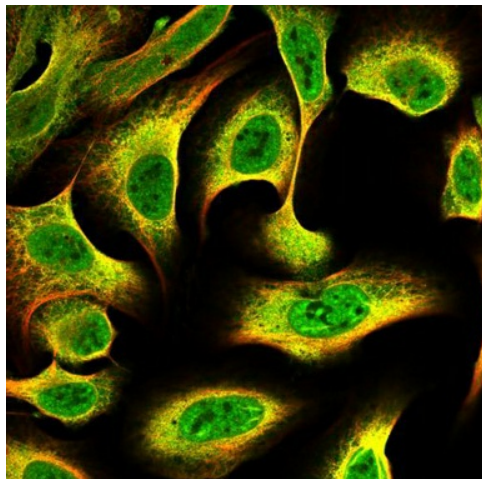
### IGFBP5 Rabbit Polyclonal Antibody

#### Product data:

|                       |   |
|-----------------------|---|
| Product Type:         | Primary Antibodies  |
| Applications:         | IHC   |
| Recommended Dilution: | WB: 0.1-0.2ug/mL, ELISA: 0.25-2ug/mL, IHC: 2mg/mL   |
| Reactivity:           | Human   |
| Host:                 | Rabbit  |
| Isotype:              | IgG   |
| Clonality:            | Polyclonal  |
| Immunogen:            | E.coli derived Recombinant Human IGF-BP5  |
| Formulation:          | A sterile filtered antibody solution was lyophilized from PBS, pH 7.2.  |
| Purification:         | Produced from sera of rabbits pre-immunized with highly pure (>98%) recombinant hIGF-BP5. Anti-Human IGF-BP5 specific antibody was purified by affinity chromatography employing immobilized hIGF-BP5 matrix. |
| Conjugation:          | Unconjugated  |
| Storage:              | Store at -20°C as received.   |
| Stability:            | Stable for 12 months from date of receipt.  |
| Gene Name:            | insulin like growth factor binding protein 5  |
| Database Link:        | <a href="#">NP_000590</a><br><a href="#">Entrez Gene 3488 Human</a><br><a href="#">P24593</a>   |
| Synonyms:             | IBP5  |
| Protein Families:     | Druggable Genome, Secreted Protein  |



[View online »](#)

**Product images:**

This antibody stained U-2 OS and U-251 MG cells. The primary antibody was incubated at 2.0 mg/ml overnight at 4C followed by a fluorescent labeled secondary antibody. Optimal concentrations and conditions may vary. Information and photo are courtesy of the Cell Profiling group, SciLifeLab Stockholm. \*Additional Immunostaining data available. Please contact Tech Support for information.