

## Product datasheet for **TA328352**

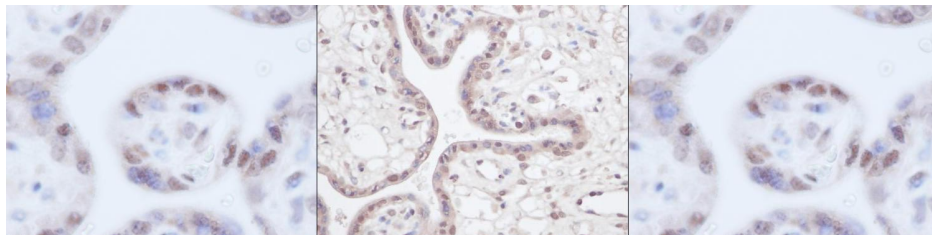
### IGFBP3 Rabbit Polyclonal Antibody

#### Product data:

Product Type:	Primary Antibodies
Applications:	IHC
Recommended Dilution:	WB: 0.1-0.2ug/mL, ELISA: 0.25-2ug/mL, IHC: 0.25ug/mL - 1mg/mL
Reactivity:	Human
Host:	Rabbit
Isotype:	IgG
Clonality:	Polyclonal
Immunogen:	E.coli derived Recombinant Human IGF-BP3
Formulation:	A sterile filtered antibody solution was lyophilized from PBS, pH 7.2.
Purification:	Produced from sera of rabbits pre-immunized with highly pure (>98%) recombinant hIGF-BP3. Anti-Human IGF-BP3 specific antibody was purified by affinity chromatography employing immobilized hIGF-BP3 matrix.
Conjugation:	Unconjugated
Storage:	Store at -20°C as received.
Stability:	Stable for 12 months from date of receipt.
Gene Name:	insulin like growth factor binding protein 3
Database Link:	<a href="#">NP_001013416</a> <a href="#">Entrez Gene 3486 Human</a> <a href="#">P17936</a>
Synonyms:	BP-53; IBP3
Protein Families:	Druggable Genome, Secreted Protein
Protein Pathways:	p53 signaling pathway



[View online »](#)

**Product images:**

This antibody stained formalin-fixed, paraffin-embedded sections of normal human placenta. The recommended concentrations are 2.5ug/ml-0.5 ug/ml for two hours at room temperature. An HRP-labeled polymer detection system was used with DAB chromogen. Heat induced antigen retrieval was performed with a pH 6.0 Sodium Citrate buffer. Optimal concentrations and conditions may vary.