

Product datasheet for **TA328351**

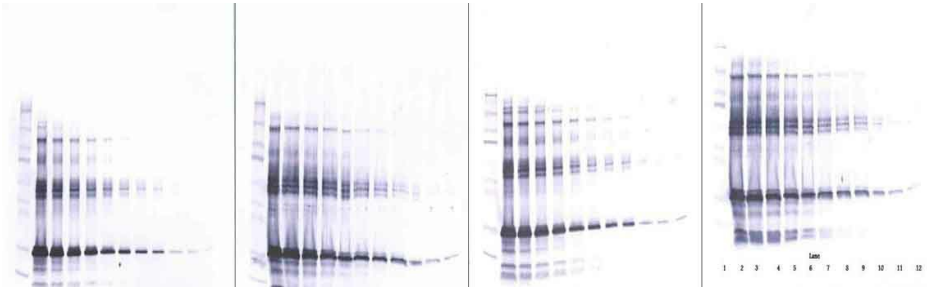
IGFBP1 Rabbit Polyclonal Antibody

Product data:

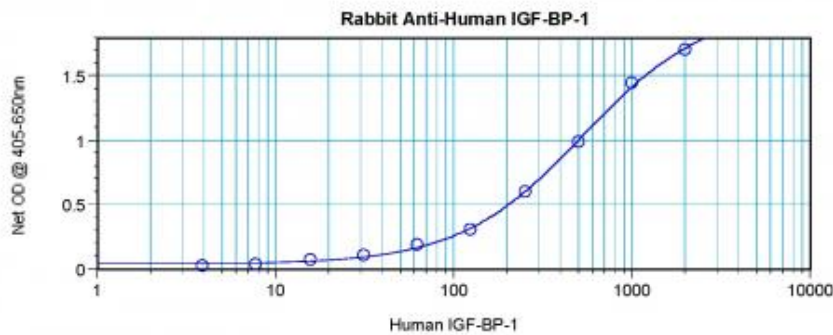
Product Type:	Primary Antibodies
Applications:	ELISA, WB
Recommended Dilution:	WB: 0.1-0.2ug/mL, ELISA: 0.25-2ug/mL, IHC: 0.25ug/mL - 1mg/mL
Reactivity:	Human
Host:	Rabbit
Isotype:	IgG
Clonality:	Polyclonal
Immunogen:	E.coli derived Recombinant Human IGF-BP1
Formulation:	A sterile filtered antibody solution was lyophilized from PBS, pH 7.2.
Purification:	Produced from sera of rabbits immunized with highly pure recombinant Human IGF-BP1. Anti-Human IGF-BP1 specific antibody was purified by affinity chromatography employing an immobilized Human IGF-BP1 matrix.
Conjugation:	Unconjugated
Storage:	Store at -20°C as received.
Stability:	Stable for 12 months from date of receipt.
Gene Name:	insulin like growth factor binding protein 1
Database Link:	NP_000587 Entrez Gene 3484 Human P08833
Synonyms:	AFBP; hIGFBP-1; IBP1; IGF-BP25; PP12
Protein Families:	Adult stem cells, Druggable Genome, Embryonic stem cells, ES Cell Differentiation/IPS, Secreted Protein



[View online »](#)

Product images:


To detect hIGF-BP1 by sandwich ELISA (using 100ul/well antibody solution) a concentration of 0.5 - 2.0 ug/ml of this antibody is required. This antigen affinity purified antibody, in conjunction with Biotinylated Anti-Human IGF-BP1 ([TA328350]) as a detection antibody, allows the detection of at least 0.2 - 0.4 ng/well of recombinant hIGF-BP1.



To detect hIGF-BP1 by sandwich ELISA (using 100ul/well antibody solution) a concentration of 0.5 - 2.0 ug/ml of this antibody is required. This antigen affinity purified antibody, in conjunction with Biotinylated Anti-Human IGF-BP1 ([TA328350]) as a detection antibody, allows the detection of at least 0.2 - 0.4 ng/well of recombinant hIGF-BP1.