

## Product datasheet for **TA328349**

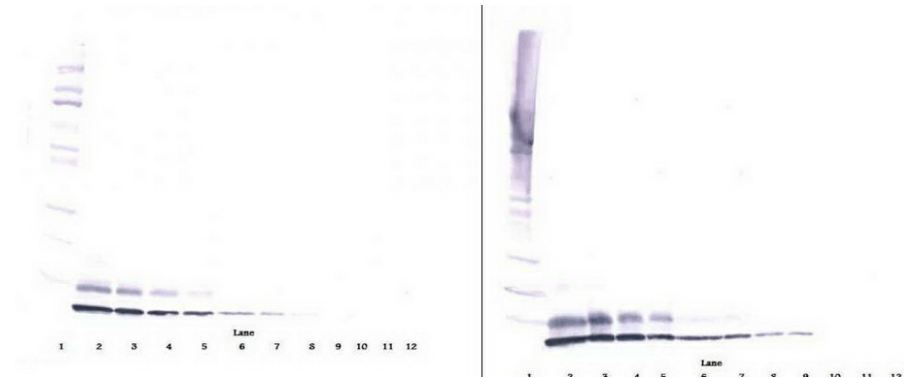
### IGF2 Rabbit Polyclonal Antibody

#### Product data:

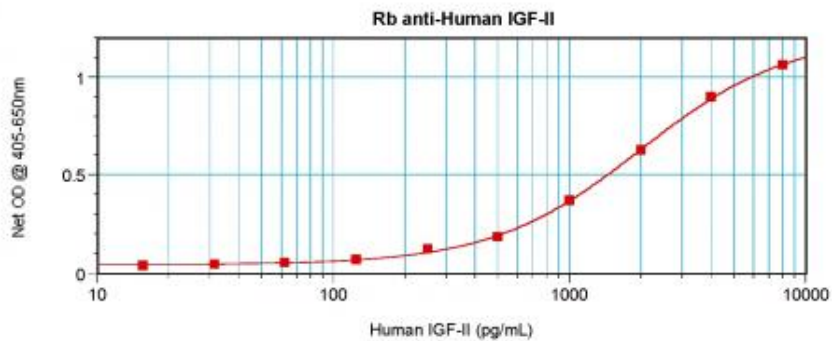
Product Type:	Primary Antibodies
Applications:	ELISA, IHC, WB
Recommended Dilution:	WB: 0.1-0.2ug/mL, ELISA: 0.25-2ug/mL, IHC: 0.25ug/mL - 1mg/mL
Reactivity:	Human
Host:	Rabbit
Isotype:	IgG
Clonality:	Polyclonal
Immunogen:	E.coli derived Recombinant Human IGF-II
Formulation:	A sterile filtered antibody solution was lyophilized from PBS, pH 7.2.
Purification:	Produced from sera of rabbits pre-immunized with highly pure (>98%) recombinant hIGF-II (human IGF-II). Anti-Human IGF-II specific antibody was purified by affinity chromatography employing immobilized hhIGF-II matrix.
Conjugation:	Unconjugated
Storage:	Store at -20°C as received.
Stability:	Stable for 12 months from date of receipt.
Gene Name:	insulin like growth factor 2
Database Link:	<a href="#">NP_000603</a> <a href="#">Entrez Gene 3481 Human P01344</a>
Synonyms:	C11orf43; GRDF; IGF-II; PP9974
Note:	Neutralization: To yield one-half maximal inhibition [ND50] of the biological activity of hIGF-II (10 ng/ml), a concentration of 3.1 - 4.6 ≤ug/ml of this antibody is required.
Protein Families:	Druggable Genome, ES Cell Differentiation/IPS, Secreted Protein



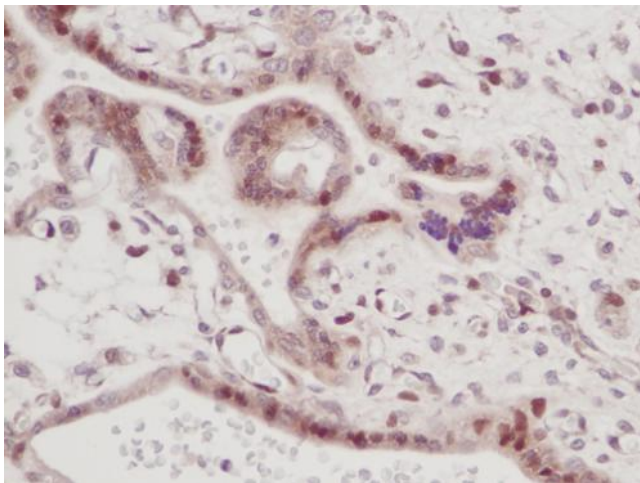
[View online »](#)

**Product images:**


To detect hIGF-II by sandwich ELISA (using 100 ul/well antibody solution) a concentration of 0.5 - 2.0 ug/ml of this antibody is required. This antigen affinity purified antibody, in conjunction with Biotinylated Anti-Human IGF-II ([TA328348]) as a detection antibody, allows the detection of at least 0.2 - 0.4 ng/well of recombinant hIGF-II.



To detect hIGF-II by sandwich ELISA (using 100 ul/well antibody solution) a concentration of 0.5 - 2.0 ug/ml of this antibody is required. This antigen affinity purified antibody, in conjunction with Biotinylated Anti-Human IGF-II ([TA328348]) as a detection antibody, allows the detection of at least 0.2 - 0.4 ng/well of recombinant hIGF-II.



To detect hIGF-II by sandwich ELISA (using 100 ul/well antibody solution) a concentration of 0.5 - 2.0 ug/ml of this antibody is required. This antigen affinity purified antibody, in conjunction with Biotinylated Anti-Human IGF-II ([TA328348]) as a detection antibody, allows the detection of at least 0.2 - 0.4 ng/well of recombinant hIGF-II.