

## Product datasheet for **TA328347**

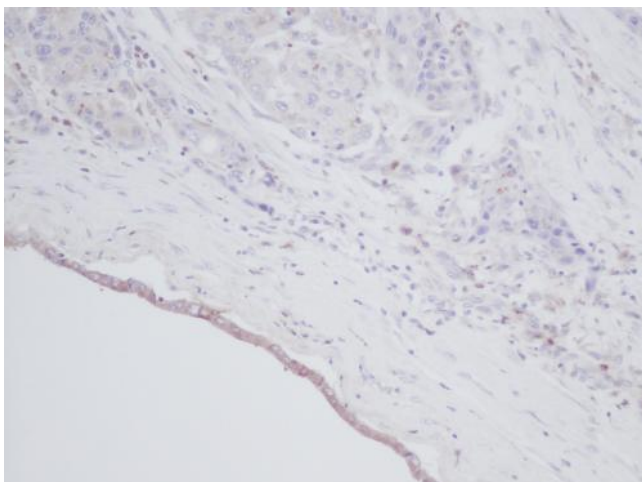
### IGF1 Rabbit Polyclonal Antibody

#### Product data:

Product Type:	Primary Antibodies
Applications:	IHC
Recommended Dilution:	WB: 0.1-0.2ug/mL, ELISA: 0.25-2ug/mL, IHC: 0.25ug/mL - 1mg/mL
Reactivity:	Human
Host:	Rabbit
Isotype:	IgG
Clonality:	Polyclonal
Immunogen:	E.coli derived Recombinant Human IGF-I
Formulation:	A sterile filtered antibody solution was lyophilized from PBS, pH 7.2.
Purification:	Produced from sera of rabbits pre-immunized with highly pure (>98%) recombinant hIGF-I. Anti-Human IGF-I specific antibody was purified by affinity chromatography employing immobilized hIGF-I matrix.
Conjugation:	Unconjugated
Storage:	Store at -20°C as received.
Stability:	Stable for 12 months from date of receipt.
Gene Name:	insulin like growth factor 1
Database Link:	<a href="#">NP_000609</a> <a href="#">Entrez Gene 3479 Human</a> <a href="#">P05019</a>
Synonyms:	IGF-I; IGF1; MGF
Note:	Neutralization: To yield one-half maximal inhibition [ND50] of the biological activity of hIGF-I (5.0 ng/ml), a concentration of 0.67 - 1.0 <=ug/ml of this antibody is required.
Protein Families:	Druggable Genome, ES Cell Differentiation/IPS, Secreted Protein
Protein Pathways:	Dilated cardiomyopathy, Focal adhesion, Glioma, Hypertrophic cardiomyopathy (HCM), Long-term depression, Melanoma, mTOR signaling pathway, Oocyte meiosis, p53 signaling pathway, Pathways in cancer, Progesterone-mediated oocyte maturation, Prostate cancer



[View online »](#)

**Product images:**

This antibody stained formalin-fixed, paraffin-embedded sections of human breast invasive ductal carcinoma. The recommended concentration is 0.25  $\mu\text{g}/\text{ml}$  with an overnight incubation at 4C. An HRP-labeled polymer detection system was used with a DAB chromogen. Optimal results for these conditions were achieved without antigen retrieval. Optimal concentrations and conditions may vary.