

## Product datasheet for **TA328346**

### IL28A (IFNL2) Rabbit Polyclonal Antibody

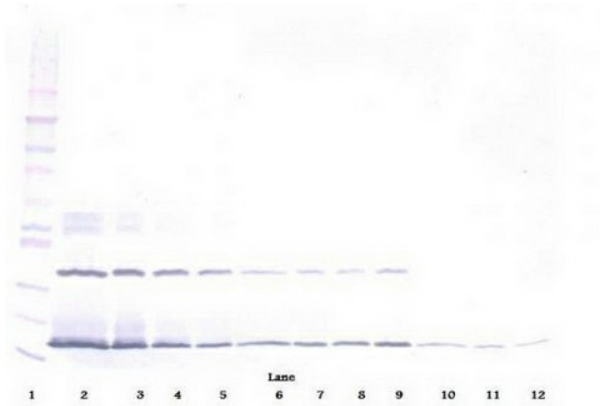
#### Product data:

Product Type:	Primary Antibodies
Applications:	ELISA, IHC, WB
Recommended Dilution:	WB: 0.1-0.2ug/mL, ELISA: 0.25-2ug/mL, IHC: 0.25ug/mL - 1mg/mL
Reactivity:	Human
Host:	Rabbit
Isotype:	IgG
Clonality:	Polyclonal
Immunogen:	E.coli derived Recombinant Human IFN- $\lambda$ 2
Formulation:	A sterile filtered antibody solution was lyophilized from PBS, pH 7.2.
Purification:	Produced from sera of rabbits pre-immunized with highly pure recombinant Human IFN- $\lambda$ 2. Anti-Human IFN- $\lambda$ 2 specific antibody was purified by affinity chromatography employing immobilized Human IFN- $\lambda$ 2 matrix.
Conjugation:	Unconjugated
Storage:	Store at -20°C as received.
Stability:	Stable for 12 months from date of receipt.
Gene Name:	interferon, lambda 2
Database Link:	<a href="#">NP_742150</a> <a href="#">Entrez Gene 282616 Human</a> <a href="#">Q8IZJ0</a>
Synonyms:	IL-28A; IL28A
Protein Families:	Druggable Genome, Secreted Protein, Transmembrane
Protein Pathways:	Cytokine-cytokine receptor interaction, Jak-STAT signaling pathway

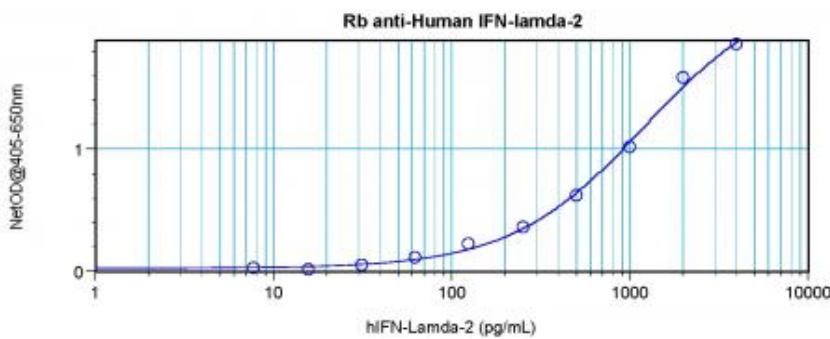


[View online »](#)

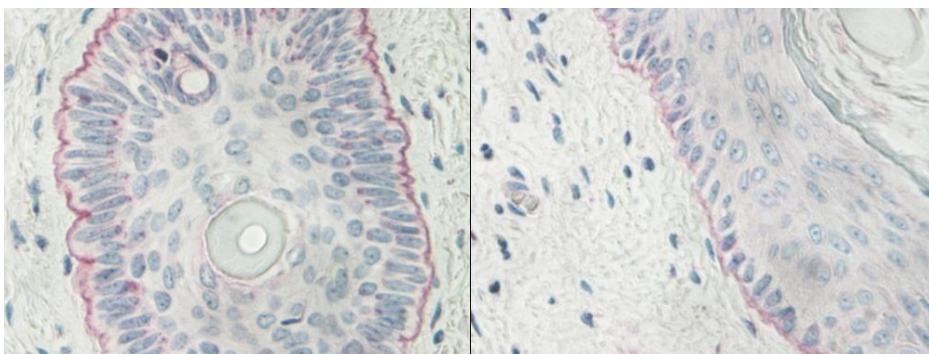
**Product images:**



To detect Human IFN-lambda;2 by sandwich ELISA (using 100 ul/well antibody solution) a concentration of 0.5 - 2.0 ug/ml of this antibody is required. This antigen affinity purified antibody, in conjunction with Biotinylated Anti-Human IFN-lambda;2 ([TA328345]) as a detection antibody, allows the detection of at least 0.2 - 0.4 ng/well of recombinant Human IFN-lambda;2.



To detect Human IFN-lambda;2 by sandwich ELISA (using 100 ul/well antibody solution) a concentration of 0.5 - 2.0 ug/ml of this antibody is required. This antigen affinity purified antibody, in conjunction with Biotinylated Anti-Human IFN-lambda;2 ([TA328345]) as a detection antibody, allows the detection of at least 0.2 - 0.4 ng/well of recombinant Human IFN-lambda;2.



To detect Human IFN-lambda;2 by sandwich ELISA (using 100 ul/well antibody solution) a concentration of 0.5 - 2.0 ug/ml of this antibody is required. This antigen affinity purified antibody, in conjunction with Biotinylated Anti-Human IFN-lambda;2 ([TA328345]) as a detection antibody, allows the detection of at least 0.2 - 0.4 ng/well of recombinant Human IFN-lambda;2.