

Product datasheet for **TA328344**

Interferon gamma (IFNG) Rabbit Polyclonal Antibody

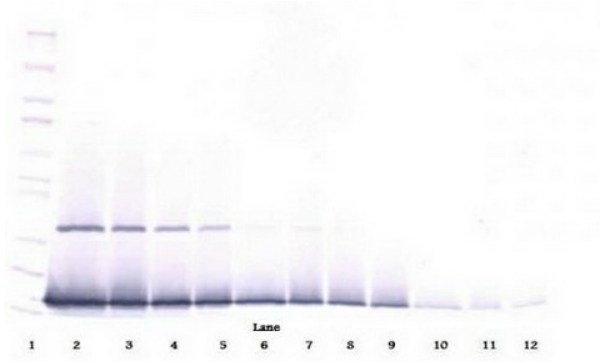
Product data:

Product Type:	Primary Antibodies
Applications:	ELISA, IHC, WB
Recommended Dilution:	WB: 0.1-0.2ug/mL, ELISA: 0.25-2ug/mL, IHC: 0.25ug/mL - 1mg/mL
Reactivity:	Human
Host:	Rabbit
Isotype:	IgG
Clonality:	Polyclonal
Immunogen:	E.coli derived Recombinant Human IFN- γ
Formulation:	A sterile filtered antibody solution was lyophilized from PBS, pH 7.2.
Purification:	Produced from sera of rabbits pre-immunized with highly pure recombinant Human IFN-gamma. Anti-Human IFN-gamma specific antibody was purified by affinity chromatography employing immobilized Human IFN-gamma matrix.
Conjugation:	Unconjugated
Storage:	Store at -20°C as received.
Stability:	Stable for 12 months from date of receipt.
Gene Name:	interferon, gamma
Database Link:	NP_000610 Entrez Gene 3458 Human P01579
Synonyms:	IFG; IFI
Note:	Neutralization: To yield one-half maximal inhibition [ND50] of the biological activity of Human IFN-gamma (10 ng/ml), a concentration of 0.13-0.20 \leq ug/ml of this antibody is required.
Protein Families:	Druggable Genome, Secreted Protein
Protein Pathways:	Allograft rejection, Cytokine-cytokine receptor interaction, Graft-versus-host disease, Jak-STAT signaling pathway, Natural killer cell mediated cytotoxicity, Proteasome, Regulation of autophagy, Systemic lupus erythematosus, T cell receptor signaling pathway, TGF-beta signaling pathway, Type I diabetes mellitus

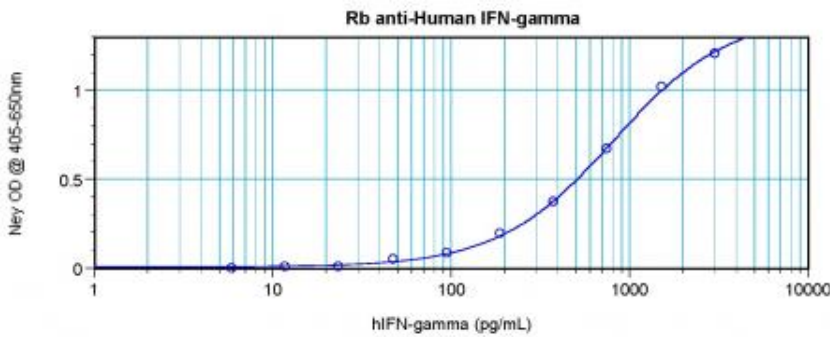


[View online »](#)

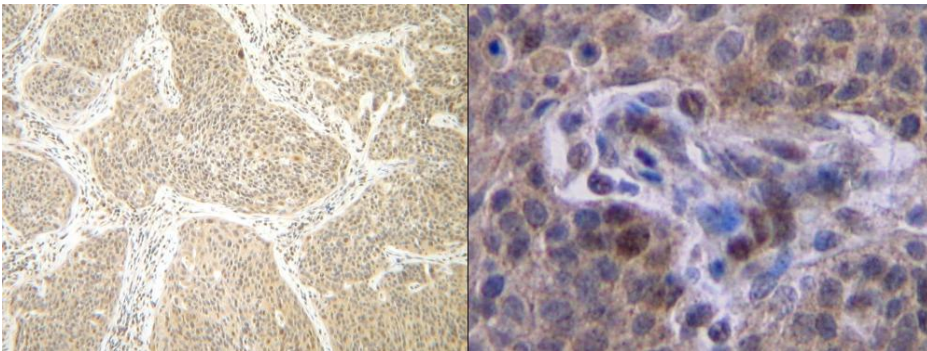
Product images:



To detect Human IFN-gamma; by sandwich ELISA (using 100 ul/well antibody solution) a concentration of 0.5 - 2.0 ug/ml of this antibody is required. This antigen affinity purified antibody, in conjunction with Biotinylated Anti-Human IFN-gamma; ([TA328343]) as a detection antibody, allows the detection of at least 0.2 - 0.4 ng/well of recombinant Human IFN-gamma;



To detect Human IFN-gamma; by sandwich ELISA (using 100 ul/well antibody solution) a concentration of 0.5 - 2.0 ug/ml of this antibody is required. This antigen affinity purified antibody, in conjunction with Biotinylated Anti-Human IFN-gamma; ([TA328343]) as a detection antibody, allows the detection of at least 0.2 - 0.4 ng/well of recombinant Human IFN-gamma;



To detect Human IFN-gamma; by sandwich ELISA (using 100 ul/well antibody solution) a concentration of 0.5 - 2.0 ug/ml of this antibody is required. This antigen affinity purified antibody, in conjunction with Biotinylated Anti-Human IFN-gamma; ([TA328343]) as a detection antibody, allows the detection of at least 0.2 - 0.4 ng/well of recombinant Human IFN-gamma;