

Product datasheet for **TA328342**

Interferon beta (IFNB1) Rabbit Polyclonal Antibody

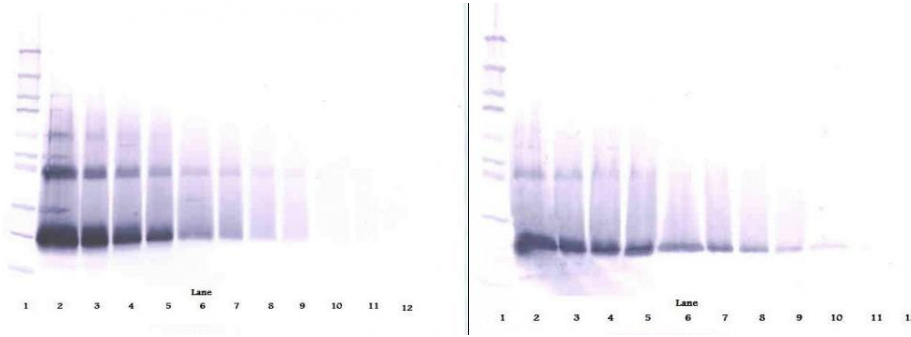
Product data:

Product Type:	Primary Antibodies
Applications:	ELISA, WB
Recommended Dilution:	WB: 0.1-0.2ug/mL, ELISA: 0.25-2ug/mL, IHC: 0.25ug/mL - 1 mg/mL
Reactivity:	Human
Host:	Rabbit
Isotype:	IgG
Clonality:	Polyclonal
Immunogen:	E.coli derived recombinant Human IFN- β
Formulation:	A sterile filtered antibody solution was lyophilized from PBS, pH 7.2.
Purification:	Produced from sera of rabbits pre-immunized with highly pure recombinant Human IFN-beta. Anti-Human IFN-beta specific antibody was purified by affinity chromatography employing immobilized Human IFN-beta matrix.
Conjugation:	Unconjugated
Storage:	Store at -20°C as received.
Stability:	Stable for 12 months from date of receipt.
Gene Name:	interferon beta 1
Database Link:	NP_002167 Entrez Gene 3456 Human P01574
Synonyms:	IFB; IFF; IFNB
Note:	Neutralization: To yield one-half maximal inhibition [ND50] of the biological activity of Human IFN-beta (5.00ug/ml), a concentration of 2.5 ug/ml of this antibody is required.
Protein Families:	Druggable Genome, Secreted Protein, Transmembrane
Protein Pathways:	Cytokine-cytokine receptor interaction, Cytosolic DNA-sensing pathway, Jak-STAT signaling pathway, Natural killer cell mediated cytotoxicity, RIG-I-like receptor signaling pathway, Toll-like receptor signaling pathway

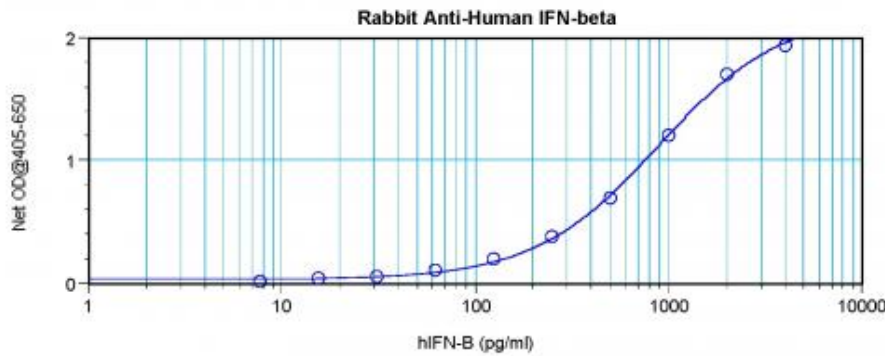


[View online »](#)

Product images:



To detect Human IFN-beta by sandwich ELISA (using 100 ul/well antibody solution) a concentration of 0.5 - 2.0 ug/ml of this antibody is required. This antigen affinity purified antibody, in conjunction with Biotinylated Anti-Human IFN-beta ([TA328341]) as a detection antibody, allows the detection of at least 0.2 - 0.4 ng/well of recombinant Human IFN-beta.



To detect Human IFN-beta by sandwich ELISA (using 100 ul/well antibody solution) a concentration of 0.5 - 2.0 ug/ml of this antibody is required. This antigen affinity purified antibody, in conjunction with Biotinylated Anti-Human IFN-beta ([TA328341]) as a detection antibody, allows the detection of at least 0.2 - 0.4 ng/well of recombinant Human IFN-beta.