

## Product datasheet for **TA328340**

### ICAM1 Rabbit Polyclonal Antibody

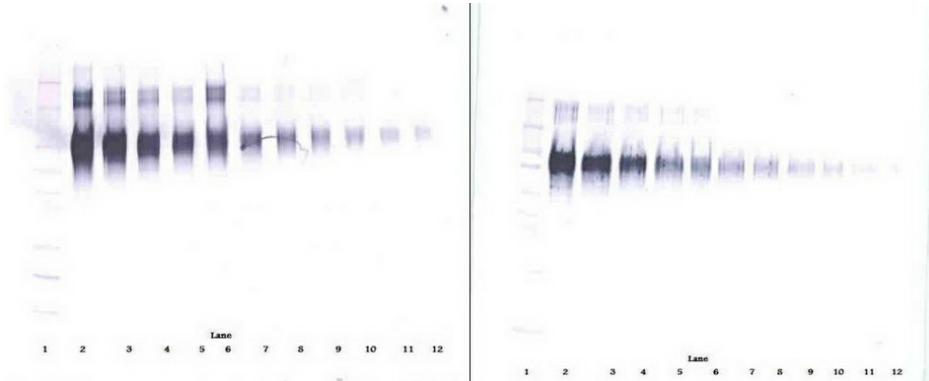
#### Product data:

Product Type:	Primary Antibodies
Applications:	ELISA, IHC, WB
Recommended Dilution:	WB: 0.1-0.2ug/mL, ELISA: 0.25-2ug/mL, IHC: 0.25ug/mL - 1mg/mL
Reactivity:	Human
Host:	Rabbit
Isotype:	IgG
Clonality:	Polyclonal
Immunogen:	CHO cells derived Recombinant Human ICAM-1
Formulation:	A sterile filtered antibody solution was lyophilized from PBS, pH 7.2.
Purification:	Produced from sera of rabbits immunized with highly pure recombinant Human ICAM-1. Anti-Human ICAM-1 specific antibody was purified by affinity chromatography employing an immobilized Human ICAM-1 matrix.
Conjugation:	Unconjugated
Storage:	Store at -20°C as received.
Stability:	Stable for 12 months from date of receipt.
Gene Name:	intercellular adhesion molecule 1
Database Link:	<a href="#">NP_000192</a> <a href="#">Entrez Gene 3383 Human</a> <a href="#">P05362</a>
Synonyms:	BB2; CD54; P3.58
Note:	Neutralization: To yield one-half maximal inhibition [ND50] of the biological activity of Human ICAM-1 (10 ng/ml), a concentration of 8.0 u/ml of this antibody is required.
Protein Families:	Druggable Genome, ES Cell Differentiation/IPS, Transmembrane
Protein Pathways:	Cell adhesion molecules (CAMs), Leukocyte transendothelial migration, Natural killer cell mediated cytotoxicity, Viral myocarditis

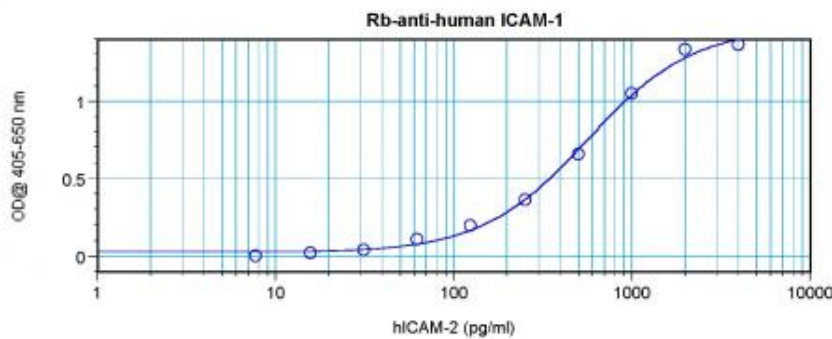


[View online »](#)

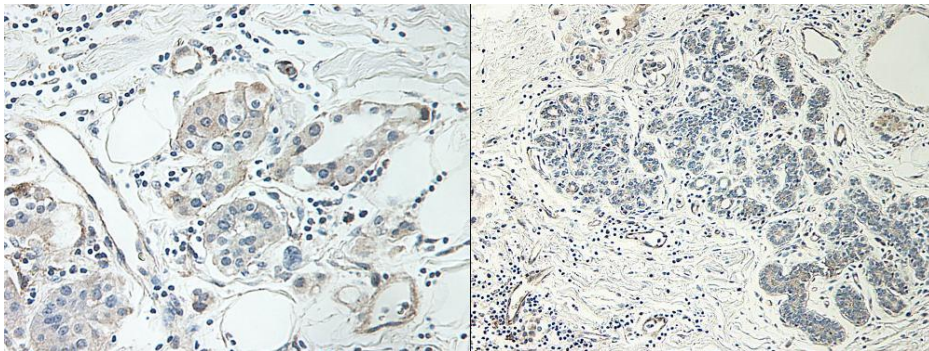
Product images:



To detect Human ICAM-1 by sandwich ELISA (using 100ul/well antibody solution) a concentration of 0.5 - 2.0 ug/ml of this antibody is required. This antigen affinity purified antibody, in conjunction with Biotinylated Anti-Human ICAM-1 ([TA328339]) as a detection antibody, allows the detection of at least 0.2 - 0.4 ng/well of recombinant Human ICAM-1.



To detect Human ICAM-1 by sandwich ELISA (using 100ul/well antibody solution) a concentration of 0.5 - 2.0 ug/ml of this antibody is required. This antigen affinity purified antibody, in conjunction with Biotinylated Anti-Human ICAM-1 ([TA328339]) as a detection antibody, allows the detection of at least 0.2 - 0.4 ng/well of recombinant Human ICAM-1.



To detect Human ICAM-1 by sandwich ELISA (using 100ul/well antibody solution) a concentration of 0.5 - 2.0 ug/ml of this antibody is required. This antigen affinity purified antibody, in conjunction with Biotinylated Anti-Human ICAM-1 ([TA328339]) as a detection antibody, allows the detection of at least 0.2 - 0.4 ng/well of recombinant Human ICAM-1.