

Product datasheet for **TA328337**

NRG1 Rabbit Polyclonal Antibody

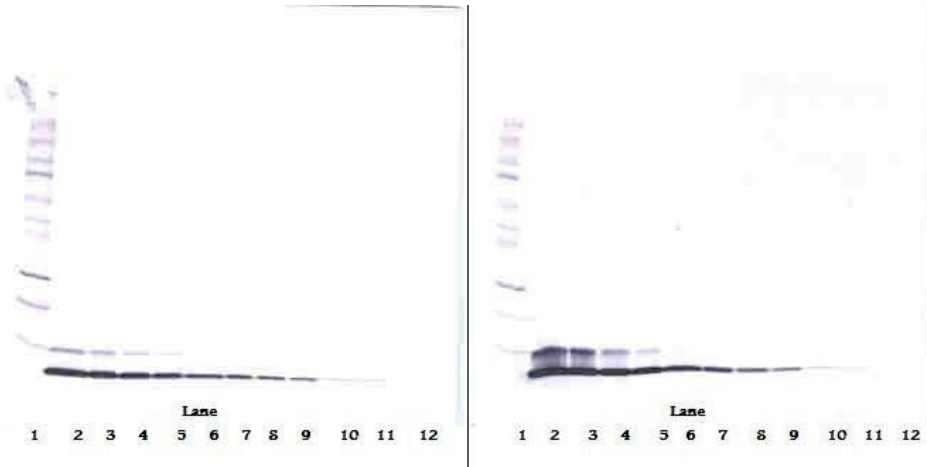
Product data:

Product Type:	Primary Antibodies
Applications:	ELISA, IHC, WB
Recommended Dilution:	WB: 0.1-0.2ug/mL, ELISA: 0.25-2ug/mL, IHC: 0.25ug/mL - 1mg/mL
Reactivity:	Human
Host:	Rabbit
Isotype:	IgG
Clonality:	Polyclonal
Immunogen:	E.coli derived Recombinant Human Heregulin ¹ -1
Formulation:	A sterile filtered antibody solution was lyophilized from PBS, pH 7.2.
Purification:	Produced from sera of rabbits immunized with highly pure recombinant Human Heregulin-beta1. Anti-Human Heregulin-beta1 specific antibody was purified by affinity chromatography employing an immobilized Human Heregulin-beta1 matrix.
Conjugation:	Unconjugated
Storage:	Store at -20°C as received.
Stability:	Stable for 12 months from date of receipt.
Gene Name:	neuregulin 1
Database Link:	NP_039250 Entrez Gene 3084 Human Q02297
Synonyms:	ARIA; GGF; GGF2; HGL; HRG; HRG1; HRGA; MST131; MSTP131; NDF; NRG1-IT2; SMDF
Note:	Neutralization: To yield one-half maximal inhibition [ND50] of the biological activity of Human Heregulin-beta1 (1.0 ng/ml), a concentration of 0.7-1.1 ug/ml of this antibody is required.
Protein Families:	Druggable Genome, Secreted Protein, Transcription Factors, Transmembrane
Protein Pathways:	ErbB signaling pathway

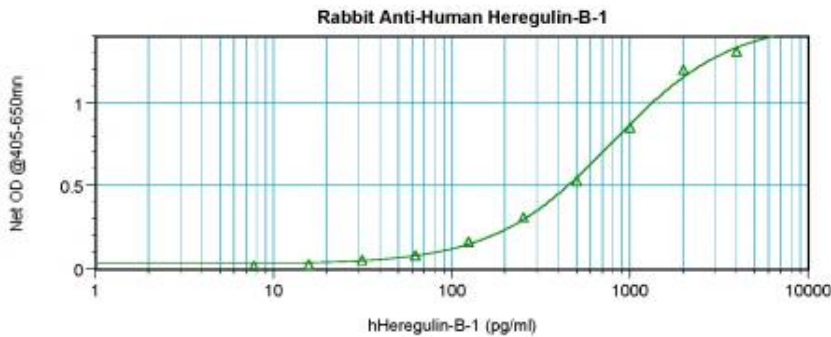


[View online »](#)

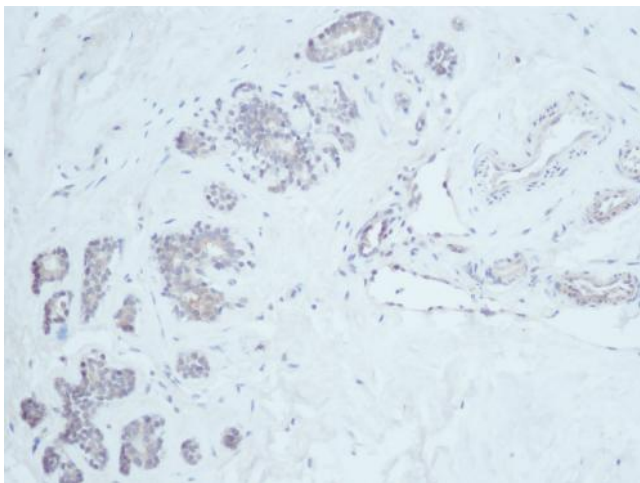
Product images:



To detect Human Heregulin-beta1 by sandwich ELISA (using 100ul/well antibody solution) a concentration of 0.5 - 2.0 ug/ml of this antibody is required. This antigen affinity purified antibody, in conjunction with Biotinylated Anti-Human Heregulin-beta1 ([TA328336]) as a detection antibody, allows the detection of at least 0.2 - 0.4 ng/well of recombinant Human Heregulin-beta1.



To detect Human Heregulin-beta1 by sandwich ELISA (using 100ul/well antibody solution) a concentration of 0.5 - 2.0 ug/ml of this antibody is required. This antigen affinity purified antibody, in conjunction with Biotinylated Anti-Human Heregulin-beta1 ([TA328336]) as a detection antibody, allows the detection of at least 0.2 - 0.4 ng/well of recombinant Human Heregulin-beta1.



To detect Human Heregulin-beta1 by sandwich ELISA (using 100ul/well antibody solution) a concentration of 0.5 - 2.0 ug/ml of this antibody is required. This antigen affinity purified antibody, in conjunction with Biotinylated Anti-Human Heregulin-beta1 ([TA328336]) as a detection antibody, allows the detection of at least 0.2 - 0.4 ng/well of recombinant Human Heregulin-beta1.