

Product datasheet for **TA328335**

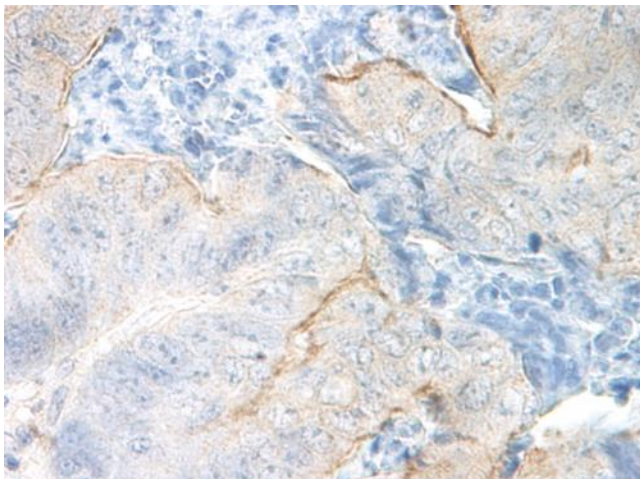
CCL14 Rabbit Polyclonal Antibody

Product data:

Product Type:	Primary Antibodies
Applications:	IHC
Recommended Dilution:	WB: 0.1-0.2ug/mL, ELISA: 0.25-2ug/mL, IHC: 0.25ug/mL - 1mg/mL
Reactivity:	Human
Host:	Rabbit
Isotype:	IgG
Clonality:	Polyclonal
Immunogen:	E.coli derived Recombinant Human HCC-1 (CCL14) (72 a.a.)
Formulation:	A sterile filtered antibody solution was lyophilized from PBS, pH 7.2.
Purification:	Produced from sera of rabbits pre-immunized with highly pure (>98%) recombinant hHCC-1. Anti-Human HCC-1 specific antibody was purified by affinity chromatography employing immobilized hHCC-1 matrix.
Conjugation:	Unconjugated
Storage:	Store at -20°C as received.
Stability:	Stable for 12 months from date of receipt.
Gene Name:	C-C motif chemokine ligand 14
Database Link:	NP_116739 Entrez Gene 6358 Human Q16627
Synonyms:	CC-1; CC-3; CKB1; HCC-1; HCC-1(1-74); HCC-3; MCIF; NCC-2; NCC2; SCYA14; SCYL2
Protein Families:	Druggable Genome, Secreted Protein
Protein Pathways:	Chemokine signaling pathway, Cytokine-cytokine receptor interaction



[View online »](#)

Product images:

This antibody stained formalin-fixed, paraffin-embedded sections of human colon/rectum adenocarcinoma. The recommended concentration is 1.5 mg/ml with an overnight incubation at 4C. An HRP-labeled polymer detection system was used with a DAB chromogen. Proteinase K antigen retrieval is recommended. Optimal concentrations and conditions may vary.