

## Product datasheet for **TA328334**

### GRO gamma (CXCL3) Rabbit Polyclonal Antibody

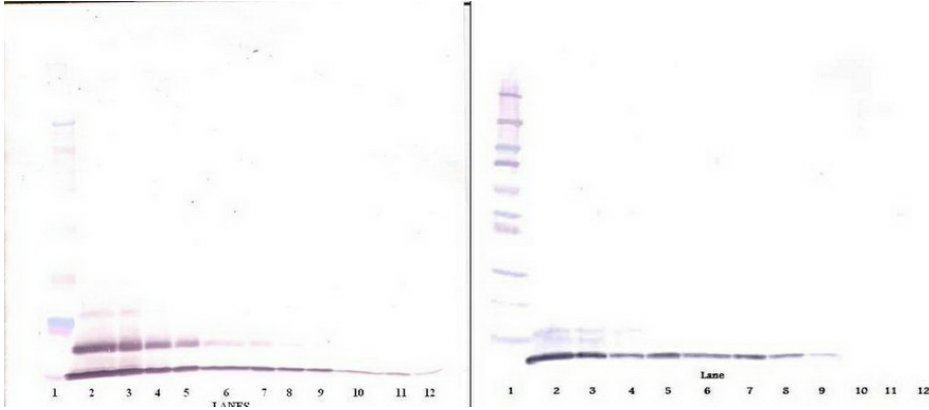
#### Product data:

Product Type:	Primary Antibodies
Applications:	ELISA, IHC, WB
Recommended Dilution:	WB: 0.1-0.2ug/mL, ELISA: 0.25-2ug/mL, IHC: 0.25ug/mL - 1mg/mL
Reactivity:	Human
Host:	Rabbit
Isotype:	IgG
Clonality:	Polyclonal
Immunogen:	E.coli derived Recombinant Human GRO- $\gamma$ (CXCL3)
Formulation:	A sterile filtered antibody solution was lyophilized from PBS, pH 7.2.
Purification:	Produced from sera of rabbits pre-immunized with highly pure recombinant Human GRO-gamma. Anti-Human GRO-gamma specific antibody was purified by affinity chromatography employing immobilized Human GRO-gamma matrix.
Conjugation:	Unconjugated
Storage:	Store at -20°C as received.
Stability:	Stable for 12 months from date of receipt.
Gene Name:	C-X-C motif chemokine ligand 3
Database Link:	<a href="#">NP_002081</a> <a href="#">Entrez Gene 2921 Human P19876</a>
Synonyms:	CINC-2b; GRO3; GRO $\gamma$ ; MIP-2b; MIP2B; SCYB3
Note:	Neutralization: To yield one-half maximal inhibition [ND50] of the biological activity of Human GRO-gamma (100 ng/ml), a concentration of 1.0-2.0 $\leq$ ug/ml of this antibody is required.
Protein Families:	Druggable Genome, Secreted Protein
Protein Pathways:	Chemokine signaling pathway, Cytokine-cytokine receptor interaction

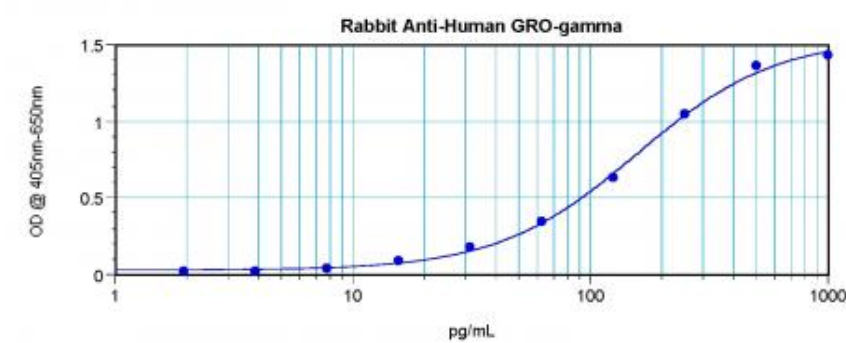


[View online »](#)

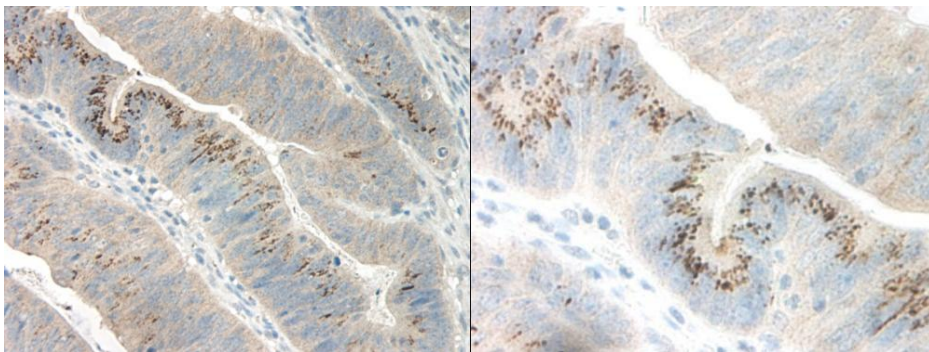
Product images:



To detect Human GRO-gamma; by sandwich ELISA (using 100 ul/well antibody solution) a concentration of 0.5 - 2.0 ug/ml of this antibody is required. This antigen affinity purified antibody, in conjunction with Biotinylated Anti-Human GRO-gamma; ([TA328333]) as a detection antibody, allows the detection of at least 0.2 - 0.4 ng/well of recombinant Human GRO-gamma;.



To detect Human GRO-gamma; by sandwich ELISA (using 100 ul/well antibody solution) a concentration of 0.5 - 2.0 ug/ml of this antibody is required. This antigen affinity purified antibody, in conjunction with Biotinylated Anti-Human GRO-gamma; ([TA328333]) as a detection antibody, allows the detection of at least 0.2 - 0.4 ng/well of recombinant Human GRO-gamma;.



To detect Human GRO-gamma; by sandwich ELISA (using 100 ul/well antibody solution) a concentration of 0.5 - 2.0 ug/ml of this antibody is required. This antigen affinity purified antibody, in conjunction with Biotinylated Anti-Human GRO-gamma; ([TA328333]) as a detection antibody, allows the detection of at least 0.2 - 0.4 ng/well of recombinant Human GRO-gamma;.