

Product datasheet for **TA328332**

GRO beta (CXCL2) Rabbit Polyclonal Antibody

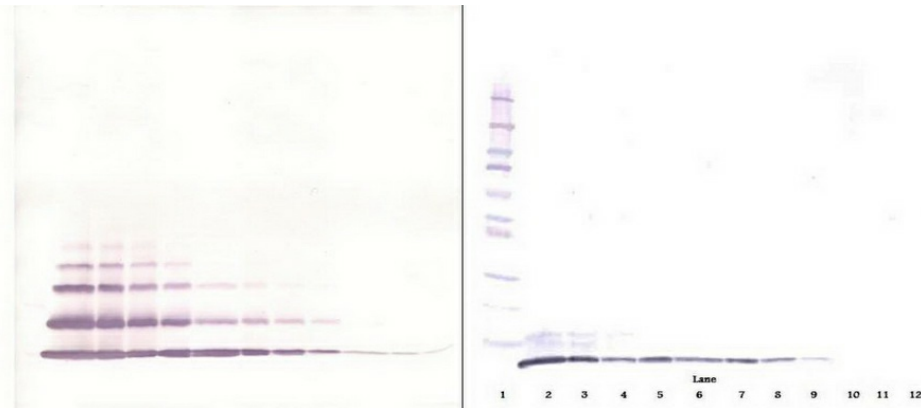
Product data:

Product Type:	Primary Antibodies
Applications:	ELISA, IHC, WB
Recommended Dilution:	WB: 0.1-0.2ug/mL, ELISA: 0.25-2ug/mL, IHC: 0.25ug/mL - 1mg/mL
Reactivity:	Human
Host:	Rabbit
Isotype:	IgG
Clonality:	Polyclonal
Immunogen:	E.coli derived Recombinant Human GRO- β^2 (CXCL2)
Formulation:	A sterile filtered antibody solution was lyophilized from PBS, pH 7.2.
Purification:	Produced from sera of rabbits pre-immunized with highly pure recombinant Human GRO-beta. Anti-Human GRO-beta specific antibody was purified by affinity chromatography employing immobilized Human GRO-beta matrix.
Conjugation:	Unconjugated
Storage:	Store at -20°C as received.
Stability:	Stable for 12 months from date of receipt.
Gene Name:	C-X-C motif chemokine ligand 2
Database Link:	NP_002080 Entrez Gene 2920 Human P19875
Synonyms:	CINC-2a; GRO2; GRO β ; MGSA-b; MIP-2a; MIP2; MIP2A; SCYB2
Protein Families:	Druggable Genome, Secreted Protein
Protein Pathways:	Chemokine signaling pathway, Cytokine-cytokine receptor interaction, NOD-like receptor signaling pathway

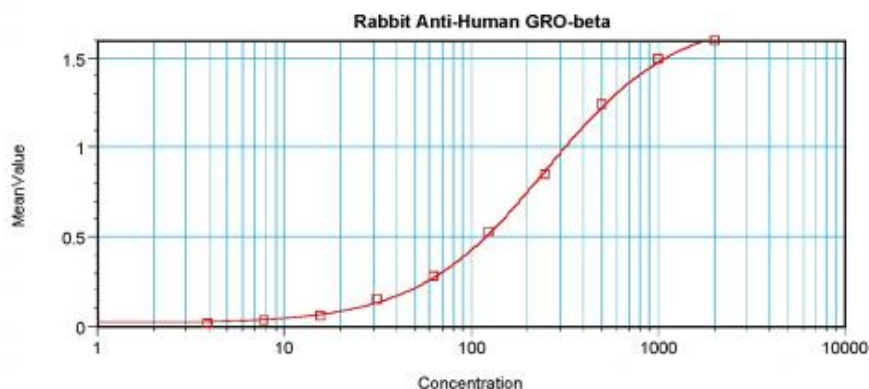


[View online »](#)

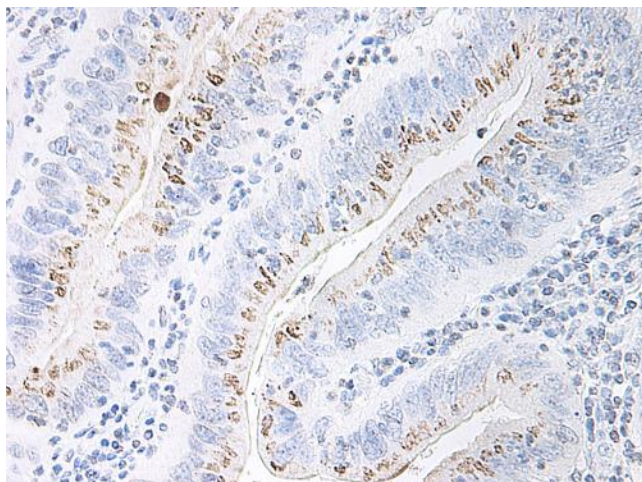
Product images:



To detect Human GRO-beta by sandwich ELISA (using 100 ul/well antibody solution) a concentration of 0.5 - 2.0 ug/ml of this antibody is required. This antigen affinity purified antibody, in conjunction with Biotinylated Anti-Human GRO-beta ([TA328331]) as a detection antibody, allows the detection of at least 0.2 - 0.4 ng/well of recombinant Human GRO-beta.



To detect Human GRO-beta by sandwich ELISA (using 100 ul/well antibody solution) a concentration of 0.5 - 2.0 ug/ml of this antibody is required. This antigen affinity purified antibody, in conjunction with Biotinylated Anti-Human GRO-beta ([TA328331]) as a detection antibody, allows the detection of at least 0.2 - 0.4 ng/well of recombinant Human GRO-beta.



To detect Human GRO-beta by sandwich ELISA (using 100 ul/well antibody solution) a concentration of 0.5 - 2.0 ug/ml of this antibody is required. This antigen affinity purified antibody, in conjunction with Biotinylated Anti-Human GRO-beta ([TA328331]) as a detection antibody, allows the detection of at least 0.2 - 0.4 ng/well of recombinant Human GRO-beta.