

## Product datasheet for **TA328331**

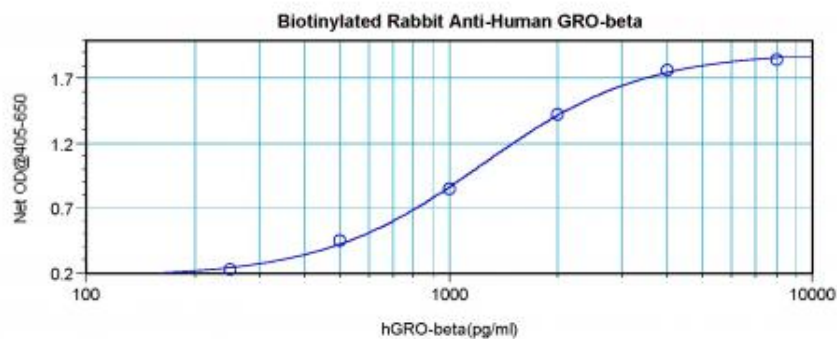
### GRO beta (CXCL2) Rabbit Polyclonal Antibody

#### Product data:

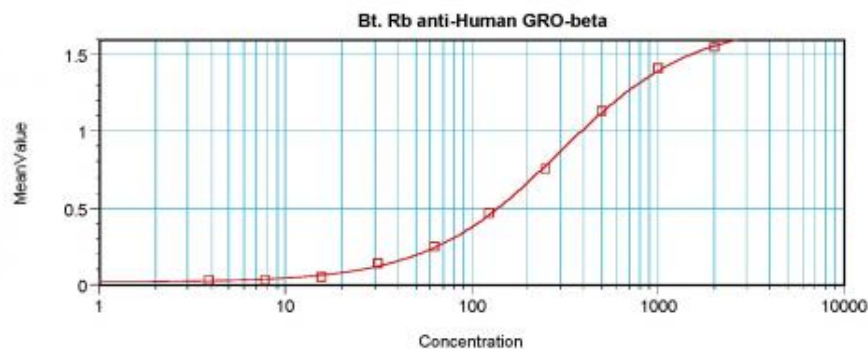
Product Type:	Primary Antibodies
Applications:	ELISA
Recommended Dilution:	WB: 0.1-0.2ug/mL, ELISA: 0.25-2ug/mL
Reactivity:	Human
Host:	Rabbit
Isotype:	IgG
Clonality:	Polyclonal
Immunogen:	E.coli derived Recombinant Human GRO- $\beta$ (CXCL2)
Formulation:	A sterile filtered antibody solution was lyophilized from PBS, pH 7.2.
Purification:	Produced from sera of rabbits pre-immunized with highly pure recombinant Human GRO-beta. Anti-Human GRO-beta specific antibody was purified by affinity chromatography and then biotinylated.
Conjugation:	Biotin
Storage:	Store at -20°C as received.
Stability:	Stable for 12 months from date of receipt.
Gene Name:	C-X-C motif chemokine ligand 2
Database Link:	<a href="#">NP_002080</a> <a href="#">Entrez Gene 2920 Human P19875</a>
Synonyms:	CINC-2a; GRO2; GRO $\beta$ ; MGSA-b; MIP-2a; MIP2; MIP2A; SCYB2
Protein Families:	Druggable Genome, Secreted Protein
Protein Pathways:	Chemokine signaling pathway, Cytokine-cytokine receptor interaction, NOD-like receptor signaling pathway



[View online »](#)

**Product images:**


To detect Human GRO-beta by direct ELISA (using 100 ul/well antibody solution) a concentration of 0.25-1.0 ug/ml of this antibody is required. This biotinylated polyclonal antibody, in conjunction with compatible secondary reagents, allows the detection of at least 0.2-0.4 ng/well of recombinant Human GRO-beta.



To detect Human GRO-beta by sandwich ELISA (using 100 ul/well antibody solution) a concentration of 0.25-1.0 ug/ml of this antibody is required. This biotinylated polyclonal antibody, in conjunction with Polyclonal Anti-Human GRO-beta ([TA328332]) as a capture antibody, allows the detection of at least 0.2-0.4 ng/well of recombinant Human GRO-beta.