

## Product datasheet for **TA328330**

### GRO alpha (CXCL1) Rabbit Polyclonal Antibody

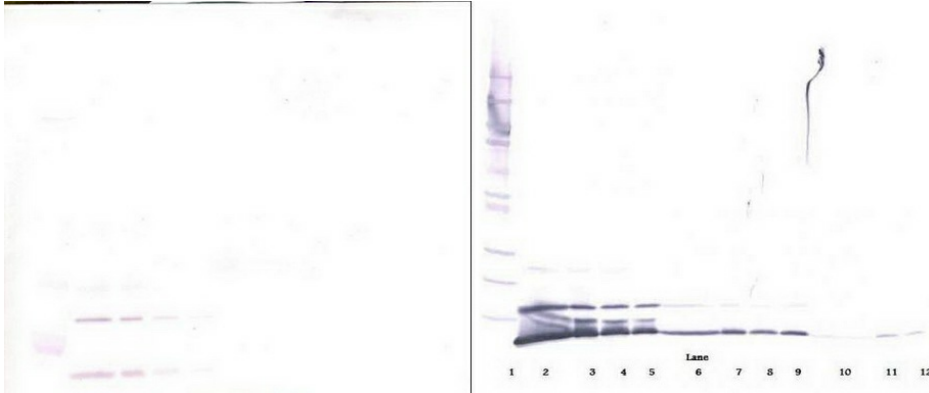
#### Product data:

Product Type:	Primary Antibodies
Applications:	ELISA, IHC, WB
Recommended Dilution:	WB: 0.1-0.2ug/mL, ELISA: 0.25-2ug/mL, IHC: 0.25ug/mL - 1mg/mL
Reactivity:	Human
Host:	Rabbit
Isotype:	IgG
Clonality:	Polyclonal
Immunogen:	E.coli derived Recombinant Human GRO/MGSA (CXCL1)
Formulation:	A sterile filtered antibody solution was lyophilized from PBS, pH 7.2.
Purification:	Produced from sera of rabbits pre-immunized with highly pure recombinant Human GRO/MGSA. Anti-Human GRO/MGSA specific antibody was purified by affinity chromatography employing immobilized Human GRO/MGSA matrix.
Conjugation:	Unconjugated
Storage:	Store at -20°C as received.
Stability:	Stable for 12 months from date of receipt.
Gene Name:	C-X-C motif chemokine ligand 1
Database Link:	<a href="#">NP_001502</a> <a href="#">Entrez Gene 2919 Human</a> <a href="#">P09341</a>
Synonyms:	FSP; GRO1; GROa; MGSA; MGSA-a; NAP-3; SCYB1
Note:	Neutralization: To yield one-half maximal inhibition [ND50] of the biological activity of Human GRO/MGSA (100 ng/ml), a concentration of 1.5-3.0 <=ug/ml of this antibody is required.
Protein Families:	Druggable Genome, Secreted Protein
Protein Pathways:	Chemokine signaling pathway, Cytokine-cytokine receptor interaction, Epithelial cell signaling in Helicobacter pylori infection, NOD-like receptor signaling pathway

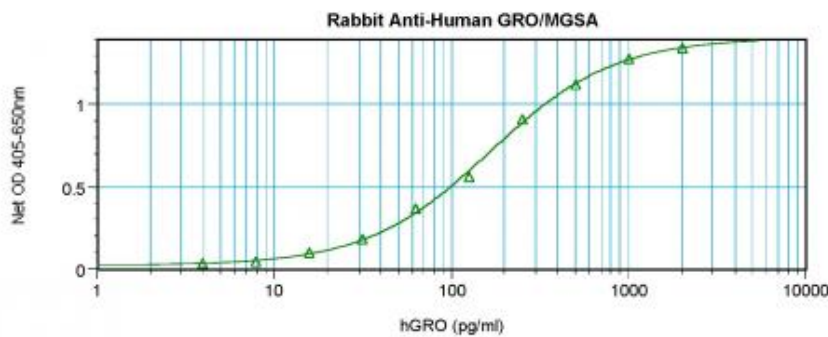


[View online »](#)

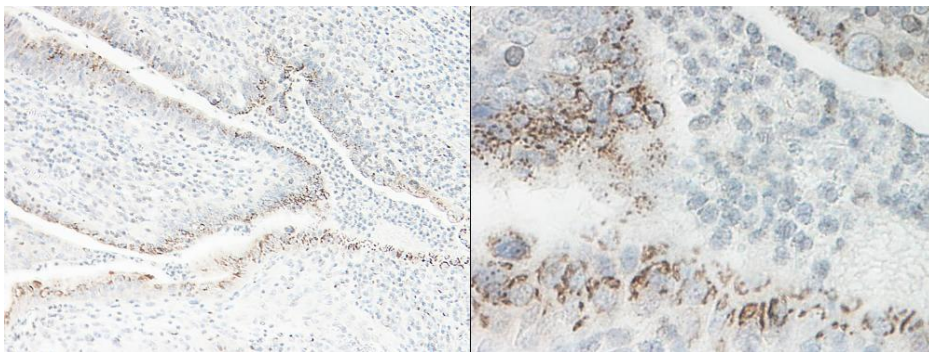
**Product images:**



To detect Human GRO/MGSA by sandwich ELISA (using 100 ul/well antibody solution) a concentration of 0.5 - 2.0 ug/ml of this antibody is required. This antigen affinity purified antibody, in conjunction with Biotinylated Anti-Human GRO/MGSA ([TA328329]) as a detection antibody, allows the detection of at least 0.2 - 0.4 ng/well of recombinant Human GRO/MGSA.



To detect Human GRO/MGSA by sandwich ELISA (using 100 ul/well antibody solution) a concentration of 0.5 - 2.0 ug/ml of this antibody is required. This antigen affinity purified antibody, in conjunction with Biotinylated Anti-Human GRO/MGSA ([TA328329]) as a detection antibody, allows the detection of at least 0.2 - 0.4 ng/well of recombinant Human GRO/MGSA.



To detect Human GRO/MGSA by sandwich ELISA (using 100 ul/well antibody solution) a concentration of 0.5 - 2.0 ug/ml of this antibody is required. This antigen affinity purified antibody, in conjunction with Biotinylated Anti-Human GRO/MGSA ([TA328329]) as a detection antibody, allows the detection of at least 0.2 - 0.4 ng/well of recombinant Human GRO/MGSA.