

## Product datasheet for **TA328325**

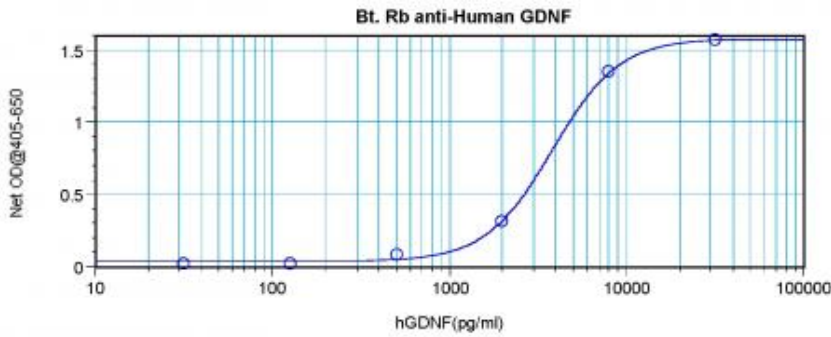
### GDNF Rabbit Polyclonal Antibody

#### Product data:

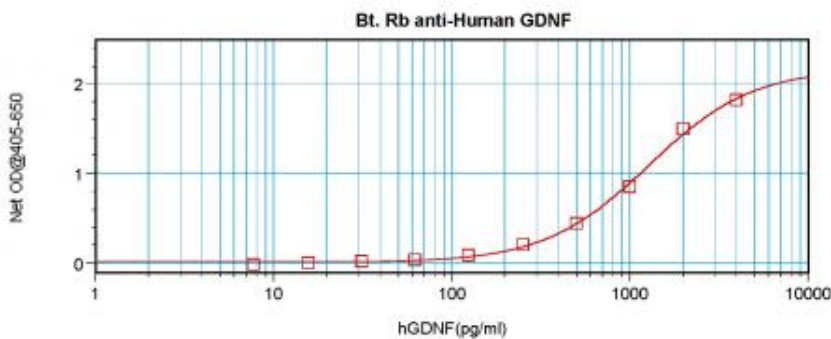
Product Type:	Primary Antibodies
Applications:	ELISA
Recommended Dilution:	WB: 0.1-0.2ug/mL, ELISA: 0.25-2ug/mL
Reactivity:	Human
Host:	Rabbit
Isotype:	IgG
Clonality:	Polyclonal
Immunogen:	E.coli derived Recombinant Human GDNF
Formulation:	A sterile filtered antibody solution was lyophilized from PBS, pH 7.2.
Purification:	Produced from sera of rabbits pre-immunized with highly pure (>98%) recombinant hGDNF. Anti-Human GDNF specific antibody was purified by affinity chromatography and then biotinylated.
Conjugation:	Biotin
Storage:	Store at -20°C as received.
Stability:	Stable for 12 months from date of receipt.
Gene Name:	glial cell derived neurotrophic factor
Database Link:	<a href="#">NP_954701</a> <a href="#">Entrez Gene 2668 Human P39905</a>
Synonyms:	ATF; ATF1; ATF2; HFB1-GDNF; HSCR3
Protein Families:	Druggable Genome, Secreted Protein, Transmembrane



[View online »](#)

**Product images:**


To detect hGDNF by direct ELISA (using 100 ul/well antibody solution) a concentration of 0.25-1.0 ug/ml of this antibody is required. This biotinylated polyclonal antibody, in conjunction with compatible secondary reagents, allows the detection of at least 0.2-0.4 ng/well of recombinant hGDNF.



To detect hGDNF by sandwich ELISA (using 100 ul/well antibody solution) a concentration of 0.25-1.0 ug/ml of this antibody is required. This biotinylated polyclonal antibody, in conjunction with Polyclonal Anti-Human GDNF ([TA328326]) as a capture antibody, allows the detection of at least 0.2-0.4 ng/well of recombinant hGDNF.