

Product datasheet for **TA328322**

G CSF (CSF3) Rabbit Polyclonal Antibody

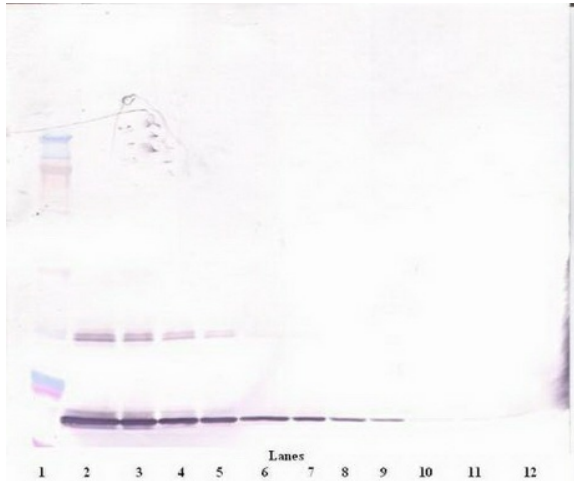
Product data:

Product Type:	Primary Antibodies
Applications:	ELISA, IHC, WB
Recommended Dilution:	WB: 0.1-0.2ug/mL, ELISA: 0.25-2ug/mL, IHC: 0.25ug/mL - 1mg/mL
Reactivity:	Human
Host:	Rabbit
Isotype:	IgG
Clonality:	Polyclonal
Immunogen:	E.coli derived Recombinant Human G-CSF
Formulation:	A sterile filtered antibody solution was lyophilized from PBS, pH 7.2.
Purification:	Produced from sera of rabbits pre-immunized with highly pure (>98%) recombinant hG-CSF. Anti-Human G-CSF specific antibody was purified by affinity chromatography employing immobilized hG-CSF matrix.
Conjugation:	Unconjugated
Storage:	Store at -20°C as received.
Stability:	Stable for 12 months from date of receipt.
Gene Name:	colony stimulating factor 3
Database Link:	NP_000750 Entrez Gene 1440 Human P09919
Synonyms:	C17orf33; CSF3OS; GCSF
Note:	Neutralization: To yield one-half maximal inhibition [ND50] of the biological activity of hG-CSF (0.5 ng/ml), a concentration of 0.04-0.06 <=ug/ml of this antibody is required.
Protein Families:	Druggable Genome, ES Cell Differentiation/IPS, Secreted Protein
Protein Pathways:	Cytokine-cytokine receptor interaction, Hematopoietic cell lineage, Jak-STAT signaling pathway

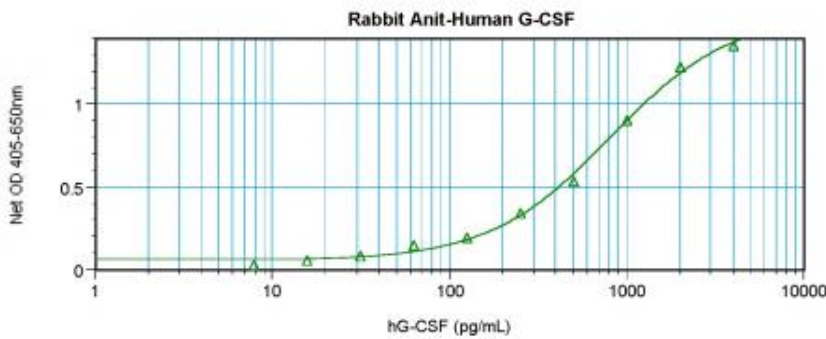


[View online »](#)

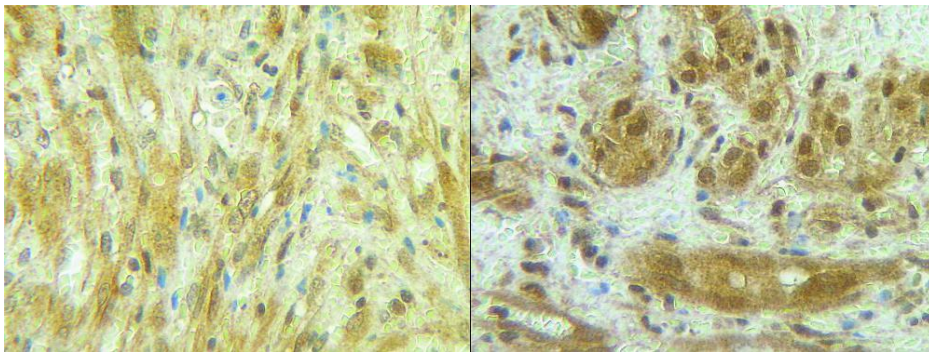
Product images:



To detect hG-CSF by sandwich ELISA (using 100 ul/well antibody solution) a concentration of 0.5 - 2.0 ug/ml of this antibody is required. This antigen affinity purified antibody, in conjunction with Biotinylated Anti-Human G-CSF ([TA328321]) as a detection antibody, allows the detection of at least 0.2 - 0.4 ng/well of recombinant hG-CSF.



To detect hG-CSF by sandwich ELISA (using 100 ul/well antibody solution) a concentration of 0.5 - 2.0 ug/ml of this antibody is required. This antigen affinity purified antibody, in conjunction with Biotinylated Anti-Human G-CSF ([TA328321]) as a detection antibody, allows the detection of at least 0.2 - 0.4 ng/well of recombinant hG-CSF.



To detect hG-CSF by sandwich ELISA (using 100 ul/well antibody solution) a concentration of 0.5 - 2.0 ug/ml of this antibody is required. This antigen affinity purified antibody, in conjunction with Biotinylated Anti-Human G-CSF ([TA328321]) as a detection antibody, allows the detection of at least 0.2 - 0.4 ng/well of recombinant hG-CSF.