

## Product datasheet for **TA328311**

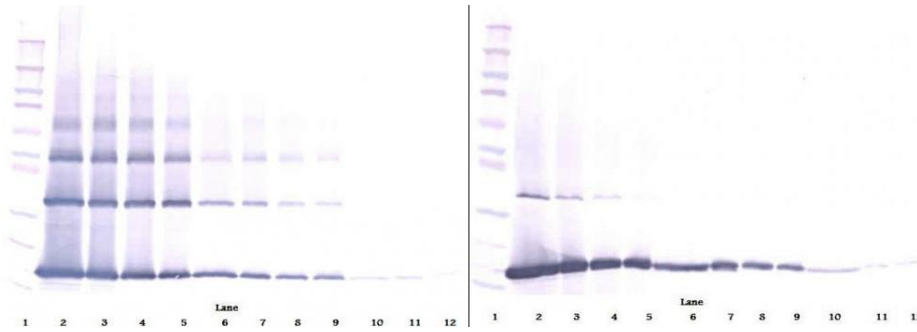
### FGF2 Rabbit Polyclonal Antibody

#### Product data:

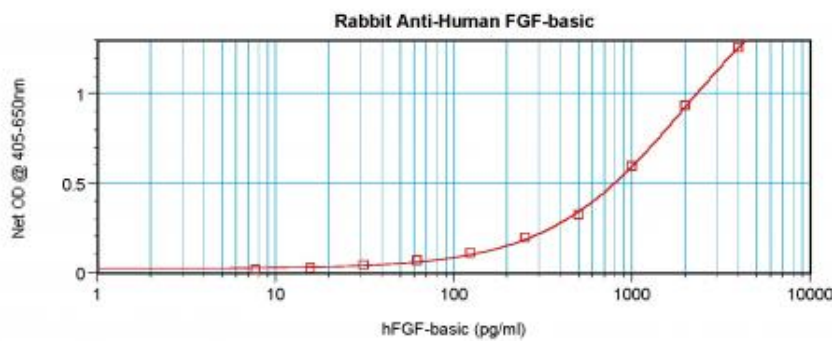
Product Type:	Primary Antibodies
Applications:	ELISA, IHC, WB
Recommended Dilution:	WB: 0.1-0.2ug/mL, ELISA: 0.25-2ug/mL, IHC: 0.25ug/mL - 1mg/mL
Reactivity:	Human
Host:	Rabbit
Isotype:	IgG
Clonality:	Polyclonal
Immunogen:	E.coli derived Recombinant Human FGF-basic (154 a.a.)
Formulation:	A sterile filtered antibody solution was lyophilized from PBS, pH 7.2.
Purification:	Produced from sera of rabbits pre-immunized with highly pure recombinant Human FGF-basic. Anti-Human FGF-basic specific antibody was purified by affinity chromatography employing immobilized Human FGF-basic matrix.
Conjugation:	Unconjugated
Storage:	Store at -20°C as received.
Stability:	Stable for 12 months from date of receipt.
Gene Name:	fibroblast growth factor 2
Database Link:	<a href="#">NP_001997</a> <a href="#">Entrez Gene 2247 Human</a> <a href="#">P09038</a>
Synonyms:	BFGF; FGF-2; FGFβ; HBGF-2
Note:	Neutralization: To yield one-half maximal inhibition [ND50] of the biological activity of Human FGF-basic (0.3 ng/ml), a concentration of 0.25 - 0.40 ≤ug/ml of this antibody is required.
Protein Families:	Druggable Genome, Secreted Protein
Protein Pathways:	MAPK signaling pathway, Melanoma, Pathways in cancer, Regulation of actin cytoskeleton



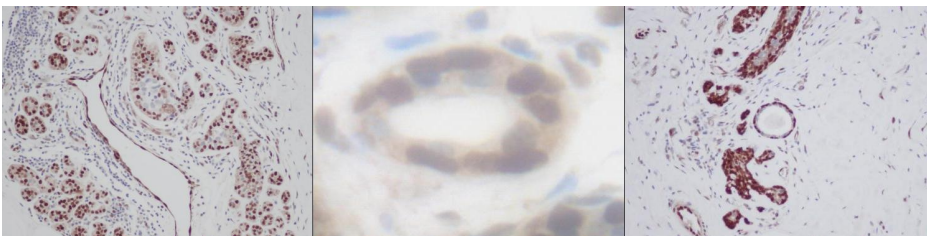
[View online »](#)

**Product images:**


To detect Human FGF-basic by sandwich ELISA (using 100 ul/well antibody solution) a concentration of 0.5 - 2.0 ug/ml of this antibody is required. This antigen affinity purified antibody, in conjunction with Biotinylated Anti-Human FGF-basic ([TA328310]) as a detection antibody, allows the detection of at least 0.2 - 0.4 ng/well of recombinant Human FGF-basic.



To detect Human FGF-basic by sandwich ELISA (using 100 ul/well antibody solution) a concentration of 0.5 - 2.0 ug/ml of this antibody is required. This antigen affinity purified antibody, in conjunction with Biotinylated Anti-Human FGF-basic ([TA328310]) as a detection antibody, allows the detection of at least 0.2 - 0.4 ng/well of recombinant Human FGF-basic.



To detect Human FGF-basic by sandwich ELISA (using 100 ul/well antibody solution) a concentration of 0.5 - 2.0 ug/ml of this antibody is required. This antigen affinity purified antibody, in conjunction with Biotinylated Anti-Human FGF-basic ([TA328310]) as a detection antibody, allows the detection of at least 0.2 - 0.4 ng/well of recombinant Human FGF-basic.