

Product datasheet for **TA328306**

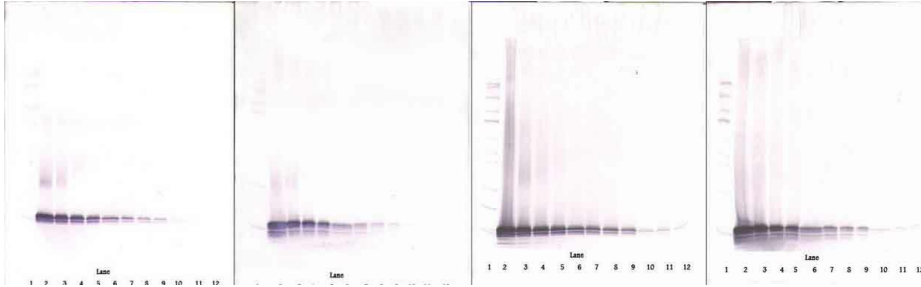
Exodus 2 (CCL21) Rabbit Polyclonal Antibody

Product data:

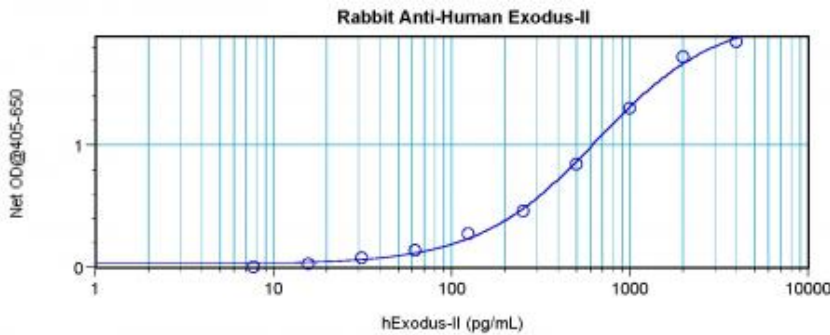
Product Type:	Primary Antibodies
Applications:	ELISA, IHC, WB
Recommended Dilution:	WB: 0.1-0.2ug/mL, ELISA: 0.25-2ug/mL, IHC: 0.25ug/mL - 1mg/mL
Reactivity:	Human
Host:	Rabbit
Isotype:	IgG
Clonality:	Polyclonal
Immunogen:	E.coli derived Recombinant Human Exodus-2 (CCL21)
Formulation:	A sterile filtered antibody solution was lyophilized from PBS, pH 7.2.
Purification:	Produced from sera of rabbits pre-immunized with highly pure (>98%) recombinant hExodus-2. Anti-Human Exodus-2 specific antibody was purified by affinity chromatography employing immobilized hExodus-2 matrix.
Conjugation:	Unconjugated
Storage:	Store at -20°C as received.
Stability:	Stable for 12 months from date of receipt.
Gene Name:	C-C motif chemokine ligand 21
Database Link:	NP_002980 Entrez Gene 6366 Human O00585
Synonyms:	6Ckine; CKb9; ECL; SCYA21; SLC; TCA4
Note:	Neutralization: To yield one-half maximal inhibition [ND50] of the biological activity of hExodus-2 (100.0 ng/ml), a concentration of 6.0-8.0 ≤ug/ml of this antibody is required.
Protein Families:	Druggable Genome, Secreted Protein
Protein Pathways:	Chemokine signaling pathway, Cytokine-cytokine receptor interaction



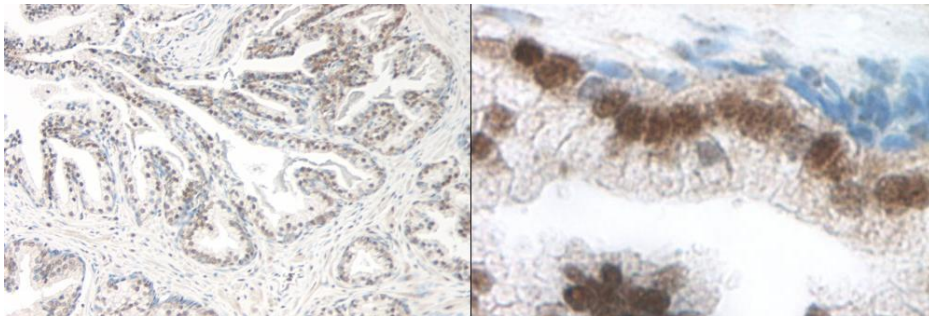
[View online »](#)

Product images:


To detect hExodus-2 by sandwich ELISA (using 100 ul/well antibody solution) a concentration of 0.5 - 2.0 ug/ml of this antibody is required. This antigen affinity purified antibody, in conjunction with Biotinylated Anti-Human Exodus-2 ([TA328305]) as a detection antibody, allows the detection of at least 0.2 - 0.4 ng/well of recombinant hExodus-2.



To detect hExodus-2 by sandwich ELISA (using 100 ul/well antibody solution) a concentration of 0.5 - 2.0 ug/ml of this antibody is required. This antigen affinity purified antibody, in conjunction with Biotinylated Anti-Human Exodus-2 ([TA328305]) as a detection antibody, allows the detection of at least 0.2 - 0.4 ng/well of recombinant hExodus-2.



To detect hExodus-2 by sandwich ELISA (using 100 ul/well antibody solution) a concentration of 0.5 - 2.0 ug/ml of this antibody is required. This antigen affinity purified antibody, in conjunction with Biotinylated Anti-Human Exodus-2 ([TA328305]) as a detection antibody, allows the detection of at least 0.2 - 0.4 ng/well of recombinant hExodus-2.