

Product datasheet for **TA328292**

EGF Rabbit Polyclonal Antibody

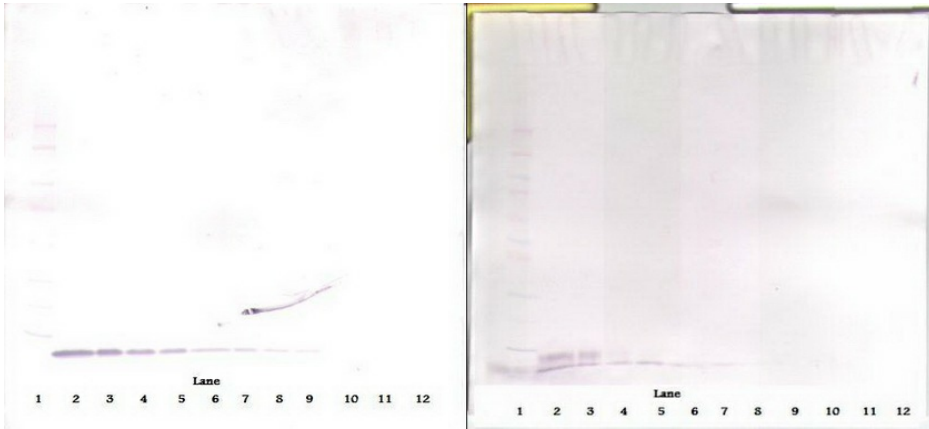
Product data:

Product Type:	Primary Antibodies
Applications:	ELISA, IHC, WB
Recommended Dilution:	WB: 0.1-0.2ug/mL, ELISA: 0.25-2ug/mL, IHC: 0.25ug/mL - 1mg/mL
Reactivity:	Human
Host:	Rabbit
Isotype:	IgG
Clonality:	Polyclonal
Immunogen:	E.coli derived recombinant Human EGF
Formulation:	A sterile filtered antibody solution was lyophilized from PBS, pH 7.2.
Purification:	Produced from sera of rabbits pre-immunized with highly pure (>98%) recombinant hEGF. Anti-Human EGF specific antibody was purified by affinity chromatography employing immobilized hEGF matrix.
Conjugation:	Unconjugated
Storage:	Store at -20°C as received.
Stability:	Stable for 12 months from date of receipt.
Gene Name:	epidermal growth factor
Database Link:	NP_001954 Entrez Gene 1950 Human P01133
Synonyms:	HOMG4; URG
Note:	Neutralization: To yield one-half maximal inhibition [ND50] of the biological activity of hEGF (25.0 pg/ml), a concentration of < 0.1 <=ug/ml of this antibody is required.
Protein Families:	Adult stem cells, Druggable Genome, Embryonic stem cells, ES Cell Differentiation/IPS, Induced pluripotent stem cells, Transmembrane
Protein Pathways:	Bladder cancer, Cytokine-cytokine receptor interaction, Endocytosis, Endometrial cancer, ErbB signaling pathway, Focal adhesion, Gap junction, Glioma, MAPK signaling pathway, Melanoma, Non-small cell lung cancer, Pancreatic cancer, Pathways in cancer, Prostate cancer, Regulation of actin cytoskeleton

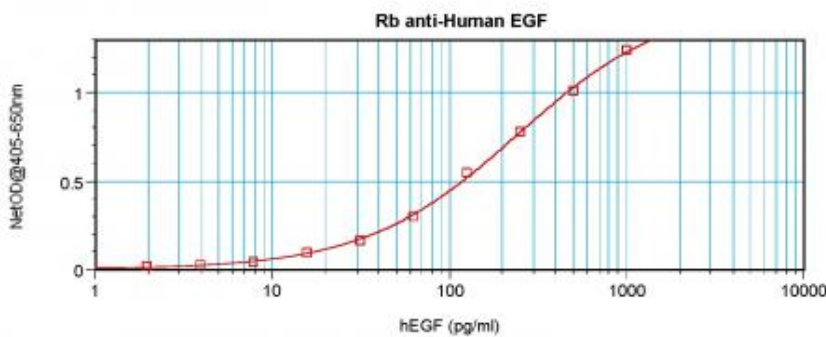


[View online »](#)

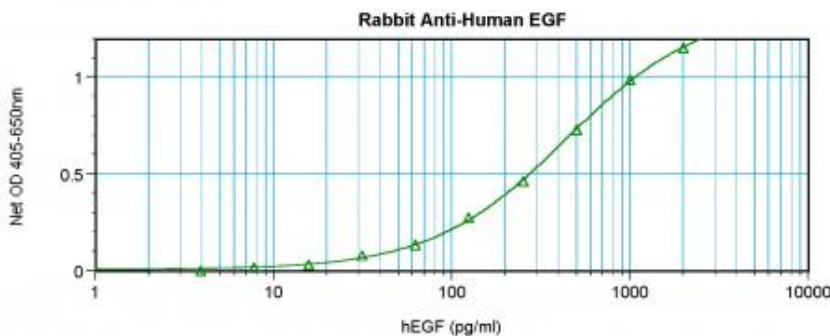
Product images:



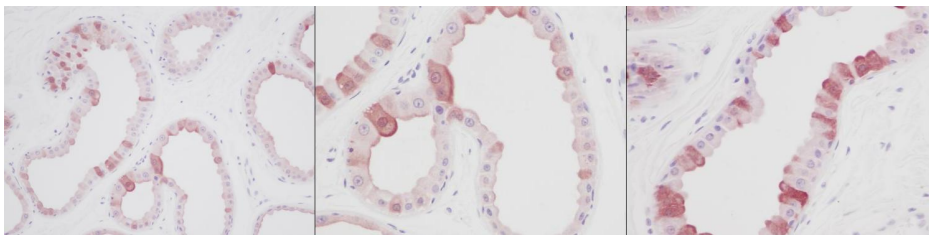
To detect hEGF by sandwich ELISA (using 100 ul/well antibody solution) a concentration of 0.5 - 2.0 ug/ml of this antibody is required. This antigen affinity purified antibody, in conjunction with Biotinylated Anti-Human EGF ([TA328291]) as a detection antibody, allows the detection of at least 0.2 - 0.4 ng/well of recombinant hEGF.



To detect hEGF by sandwich ELISA (using 100 ul/well antibody solution) a concentration of 0.5 - 2.0 ug/ml of this antibody is required. This antigen affinity purified antibody, in conjunction with Biotinylated Anti-Human EGF ([TA328291]) as a detection antibody, allows the detection of at least 0.2 - 0.4 ng/well of recombinant hEGF.



To detect hEGF by sandwich ELISA (using 100 ul/well antibody solution) a concentration of 0.5 - 2.0 ug/ml of this antibody is required. This antigen affinity purified antibody, in conjunction with Biotinylated Anti-Human EGF ([TA328291]) as a detection antibody, allows the detection of at least 0.2 - 0.4 ng/well of recombinant hEGF.



To detect hEGF by sandwich ELISA (using 100 ul/well antibody solution) a concentration of 0.5 - 2.0 ug/ml of this antibody is required. This antigen affinity purified antibody, in conjunction with Biotinylated Anti-Human EGF ([TA328291]) as a detection antibody, allows the detection of at least 0.2 - 0.4 ng/well of recombinant hEGF.