

Product datasheet for **TA328272**

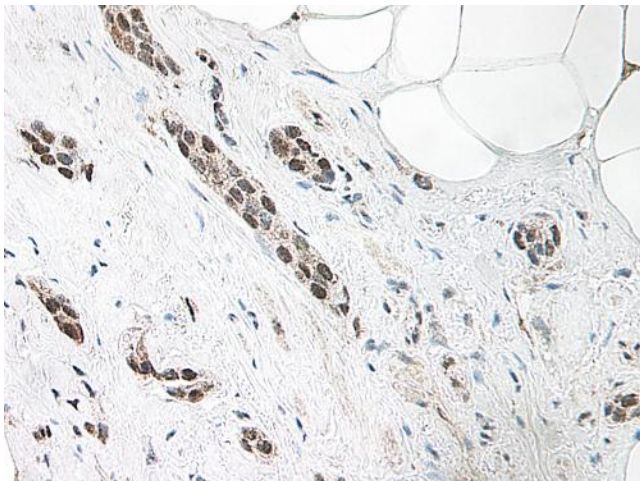
BMP7 Rabbit Polyclonal Antibody

Product data:

| | |
|------------------------------|---|
| Product Type: | Primary Antibodies |
| Applications: | IHC |
| Recommended Dilution: | WB: 0.1-0.2ug/mL, ELISA: 0.25-2ug/mL, IHC: 0.25ug/mL - 1mg/mL |
| Reactivity: | Human |
| Host: | Rabbit |
| Isotype: | IgG |
| Clonality: | Polyclonal |
| Immunogen: | CHO cells derived Recombinant Human BMP-7 |
| Formulation: | A sterile filtered antibody solution was lyophilized from PBS, pH 7.2. |
| Purification: | Produced from sera of rabbits pre-immunized with highly pure (>98%) recombinant hBMP-7. Anti-Human BMP-7 specific antibody was purified by affinity chromatography employing immobilized hBMP-7 matrix. |
| Conjugation: | Unconjugated |
| Storage: | Store at -20°C as received. |
| Stability: | Stable for 12 months from date of receipt. |
| Gene Name: | bone morphogenetic protein 7 |
| Database Link: | NP_001710 Entrez Gene 655 Human P18075 |
| Synonyms: | OP-1 |
| Note: | Neutralization: To yield one-half maximal inhibition [ND50] of the biological activity of Human BMP-7 (100 ng/ml), a concentration of 0.4-0.6 ug/ml of this antibody is required. |
| Protein Families: | Adult stem cells, Cancer stem cells, Druggable Genome, Embryonic stem cells, ES Cell Differentiation/IPS, Induced pluripotent stem cells, Secreted Protein, Stem cell relevant signaling - TGFb/BMP signaling pathway |
| Protein Pathways: | Cytokine-cytokine receptor interaction, Hedgehog signaling pathway, TGF-beta signaling pathway |



[View online »](#)

Product images:

IHC of human breast invasive ductal carcinoma. The recommended concentration is 0.25 ug/ml with an overnight incubation at 4C. An HRP-labeled polymer detection system was used with a DAB chromogen. Heat induced antigen retrieval with a pH 6.0 sodium citrate buffer is recommended. Optimal concentrations and conditions may vary.