

Product datasheet for **TA328271**

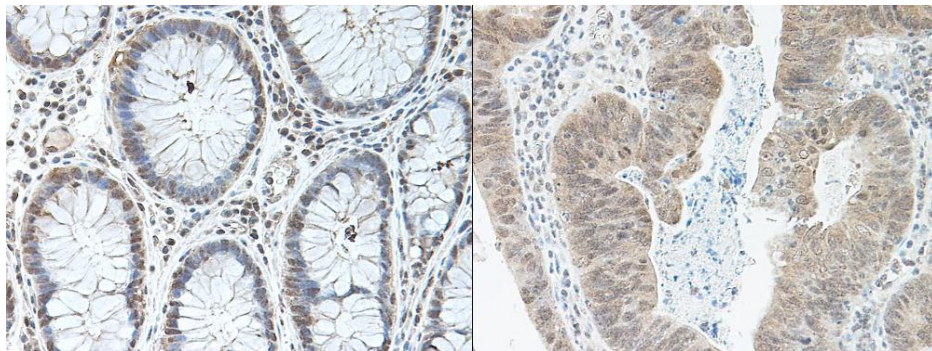
BMP2 Rabbit Polyclonal Antibody

Product data:

Product Type:	Primary Antibodies
Applications:	IHC
Recommended Dilution:	WB: 0.1-0.2ug/mL, ELISA: 0.25-2ug/mL, IHC: 0.25ug/mL - 1mg/mL
Reactivity:	Human
Host:	Rabbit
Isotype:	IgG
Clonality:	Polyclonal
Immunogen:	E.coli derived Recombinant Human BMP-2
Formulation:	A sterile filtered antibody solution was lyophilized from PBS, pH 7.2.
Purification:	Produced from sera of rabbits pre-immunized with highly pure (>98%) recombinant hBMP-2. Anti-Human BMP-2 specific antibody was purified by affinity chromatography employing immobilized hBMP-2 matrix.
Conjugation:	Unconjugated
Storage:	Store at -20°C as received.
Stability:	Stable for 12 months from date of receipt.
Gene Name:	bone morphogenetic protein 2
Database Link:	NP_001191 Entrez Gene 650 Human P12643
Synonyms:	BDA2; BMP2A
Note:	Neutralization: To yield one-half maximal inhibition [ND50] of the biological activity of hBMP-2 (200 ng/ml), a concentration of 1.3-1.9 <=ug/ml of this antibody is required.
Protein Families:	Adult stem cells, Cancer stem cells, Druggable Genome, Embryonic stem cells, ES Cell Differentiation/IPS, Induced pluripotent stem cells, Secreted Protein, Stem cell relevant signaling - TGFb/BMP signaling pathway, Transmembrane
Protein Pathways:	Acute myeloid leukemia, Basal cell carcinoma, Cytokine-cytokine receptor interaction, Endocytosis, Hedgehog signaling pathway, Hematopoietic cell lineage, Melanogenesis, Pathways in cancer, TGF-beta signaling pathway



[View online >](#)

Product images:

This antibody stained formalin-fixed, paraffin-embedded sections of human colon/rectum adenocarcinoma. The recommended concentration is 0.25 ug/ml with an overnight incubation at 4C. An HRP-labeled polymer detection system was used with a DAB chromogen. Heat induced antigen retrieval with a pH 6.0 sodium citrate buffer is recommended. Optimal concentrations and conditions may vary. *Additional Immunostaining data available. Please contact Tech Support for information.