

Product datasheet for **TA328269**

Betacellulin (BTC) Rabbit Polyclonal Antibody

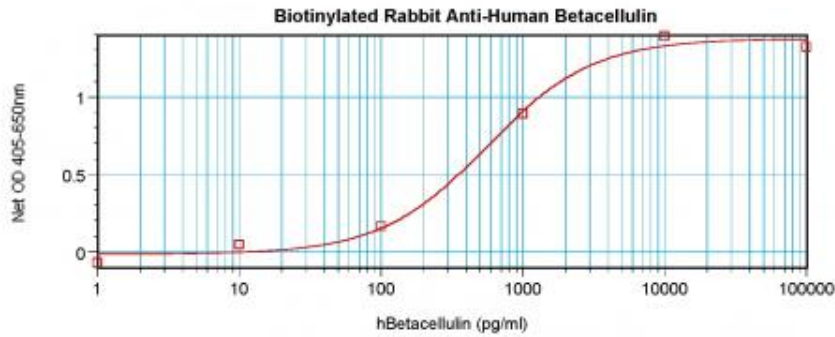
Product data:

Product Type:	Primary Antibodies
Applications:	ELISA
Recommended Dilution:	WB: 0.1-0.2ug/mL, ELISA: 0.25-2ug/mL
Reactivity:	Human
Host:	Rabbit
Isotype:	IgG
Clonality:	Polyclonal
Immunogen:	E.coli derived Recombinant Human Betacellulin
Formulation:	A sterile filtered antibody solution was lyophilized from PBS, pH 7.2.
Purification:	Produced from sera of rabbits pre-immunized with highly pure (>98%) recombinant hBetacellulin. Anti-Human Betacellulin specific antibody was purified by affinity chromatography and then biotinylated.
Conjugation:	Biotin
Storage:	Store at -20°C as received.
Stability:	Stable for 12 months from date of receipt.
Gene Name:	betacellulin
Database Link:	NP_001720 Entrez Gene 685 Human P35070
Synonyms:	betacellulin; OTTHUMP00000160600
Protein Families:	Druggable Genome, ES Cell Differentiation/IPS, Secreted Protein, Transmembrane
Protein Pathways:	ErbB signaling pathway

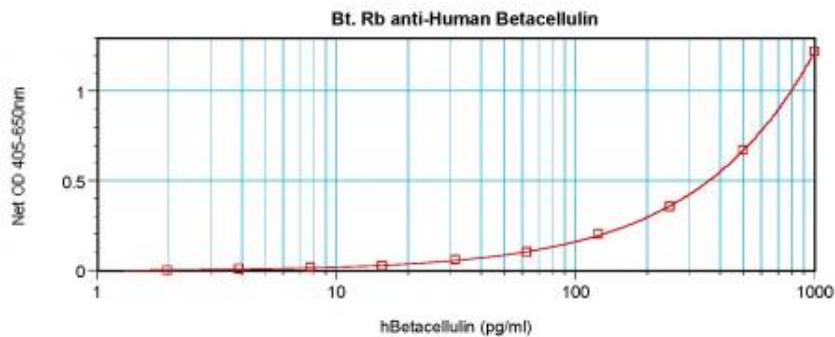


[View online »](#)

Product images:



To detect hBetacellulin by direct ELISA (using 100 ul/well antibody solution) a concentration of 0.25-1.0 ug/ml of this antibody is required. This biotinylated polyclonal antibody, in conjunction with compatible secondary reagents, allows the detection of at least 0.2-0.4 ng/well of recombinant hBetacellulin.



To detect hBetacellulin by sandwich ELISA (using 100 ul/well antibody solution) a concentration of 0.25-1.0 ug/ml of this antibody is required. This biotinylated polyclonal antibody, in conjunction with Polyclonal Anti-Human Betacellulin ([TA328268]) as a capture antibody, allows the detection of at least 0.2-0.4 ng/well of recombinant hBetacellulin.