

## Product datasheet for **TA328268**

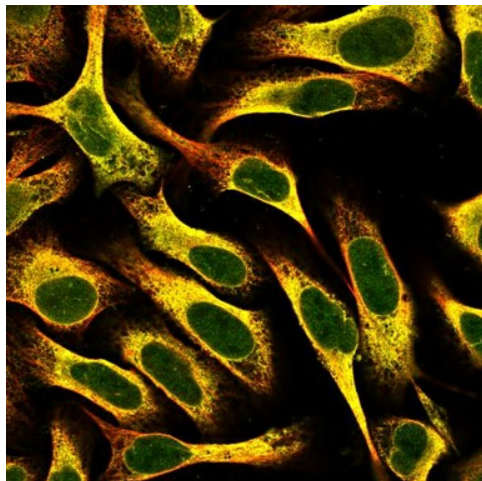
### BDNF Rabbit Polyclonal Antibody

#### Product data:

Product Type:	Primary Antibodies
Applications:	IHC
Recommended Dilution:	WB: 0.1-0.2ug/mL, ELISA: 0.25-2ug/mL, IHC: 0.25ug/mL - 1mg/mL
Reactivity:	Human
Host:	Rabbit
Isotype:	IgG
Clonality:	Polyclonal
Immunogen:	E.coli derived Recombinant Human BDNF
Formulation:	A sterile filtered antibody solution was lyophilized from PBS, pH 7.2.
Purification:	Produced from sera of rabbits pre-immunized with highly pure (>98%) recombinant hBDNF. Anti-Human BDNF specific antibody was purified by affinity chromatography employing immobilized hBDNF matrix.
Conjugation:	Unconjugated
Storage:	Store at -20°C as received.
Stability:	Stable for 12 months from date of receipt.
Gene Name:	brain-derived neurotrophic factor
Database Link:	<a href="#">NP_001700</a> <a href="#">Entrez Gene 627 Human</a> <a href="#">P23560</a>
Synonyms:	ANON2; BULN2
Note:	Neutralization: To yield one-half maximal inhibition [ND50] of the biological activity of hBDNF (2.0 ug/ml), a concentration of 0.54-0.81 ug/ml of this antibody is required.
Protein Families:	Adult stem cells, Druggable Genome, Embryonic stem cells, ES Cell Differentiation/IPS, Induced pluripotent stem cells, Secreted Protein, Transmembrane
Protein Pathways:	Huntington's disease, MAPK signaling pathway, Neurotrophin signaling pathway



[View online »](#)

**Product images:**

This antibody stained U-2 OS and U-251 MG cells. The primary antibody was incubated at 2.0 ug/ml overnight at 4C followed by a fluorescent labeled secondary antibody. Optimal concentrations and conditions may vary. Information and photo are courtesy of the Cell Profiling group, SciLifeLab Stockholm.