

## Product datasheet for **TA328262**

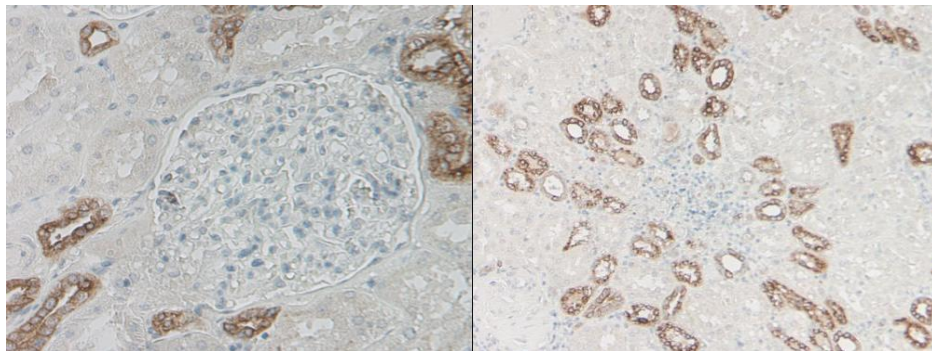
### beta Defensin 1 (DEFB1) Rabbit Polyclonal Antibody

#### Product data:

Product Type:	Primary Antibodies
Applications:	IHC
Recommended Dilution:	WB: 0.1-0.2ug/mL, ELISA: 0.25-2ug/mL, IHC: 0.25ug/mL - 1mg/mL
Reactivity:	Human
Host:	Rabbit
Isotype:	IgG
Clonality:	Polyclonal
Immunogen:	E.coli derived Recombinant Human BD-1 (47a.a.)
Formulation:	A sterile filtered antibody solution was lyophilized from PBS, pH 7.2.
Purification:	Produced from sera of rabbits pre-immunized with highly pure (>98%) recombinant hBD-1. Anti-Human BD-1 specific antibody was purified by affinity chromatography employing immobilized hBD-1 matrix.
Conjugation:	Unconjugated
Storage:	Store at -20°C as received.
Stability:	Stable for 12 months from date of receipt.
Gene Name:	defensin beta 1
Database Link:	<a href="#">NP_005209</a> <a href="#">Entrez Gene 1672 Human</a> <a href="#">P60022</a>
Synonyms:	BD1; DEFB-1; DEFB101; HBD1
Protein Families:	Secreted Protein



[View online »](#)

**Product images:**

This antibody stained formalin-fixed, paraffin-embedded sections of normal human kidney. The recommended concentration is 0.5ug/mL with an overnight incubation at 4C. An HRP-labeled polymer detection system was used with a DAB chromogen. Heat induced antigen retrieval with a pH 6.0 sodium citrate buffer is recommended. Optimal concentrations and conditions may vary.