

Product datasheet for **TA328253**

Apolipoprotein E (APOE) Rabbit Polyclonal Antibody

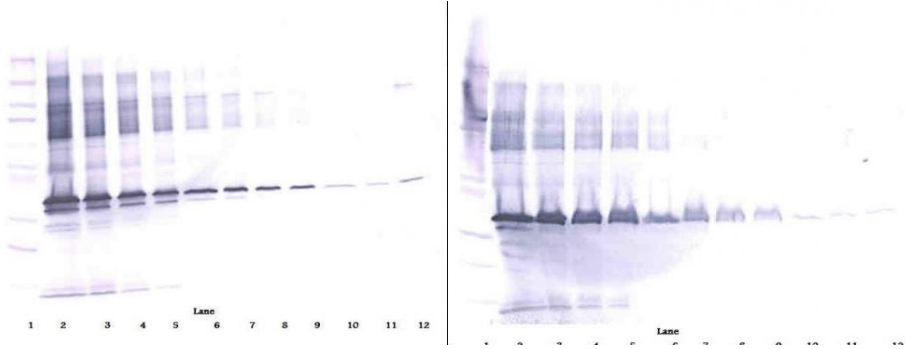
Product data:

Product Type:	Primary Antibodies
Applications:	ELISA, WB
Recommended Dilution:	WB: 0.1-0.2ug/mL, ELISA: 0.25-2ug/mL
Reactivity:	Human
Host:	Rabbit
Isotype:	IgG
Clonality:	Polyclonal
Immunogen:	E.coli derived Recombinant Human ApoE3
Formulation:	A sterile filtered antibody solution was lyophilized from PBS, pH 7.2.
Purification:	Produced from sera of rabbits pre-immunized with highly pure (>98%) recombinant hApoE3. Anti-Human ApoE3 specific antibody was purified by affinity chromatography employing immobilized hApoE3 matrix. *Cross Reactivity: human ApoE2
Conjugation:	Unconjugated
Storage:	Store at -20°C as received.
Stability:	Stable for 12 months from date of receipt.
Gene Name:	apolipoprotein E
Database Link:	NP_000032 Entrez Gene 348 Human P02649
Synonyms:	AD2; APO-E; LDLCQ5; LPG
Protein Families:	Adult stem cells, Druggable Genome, Secreted Protein, Stem cell - Pluripotency
Protein Pathways:	Alzheimer's disease

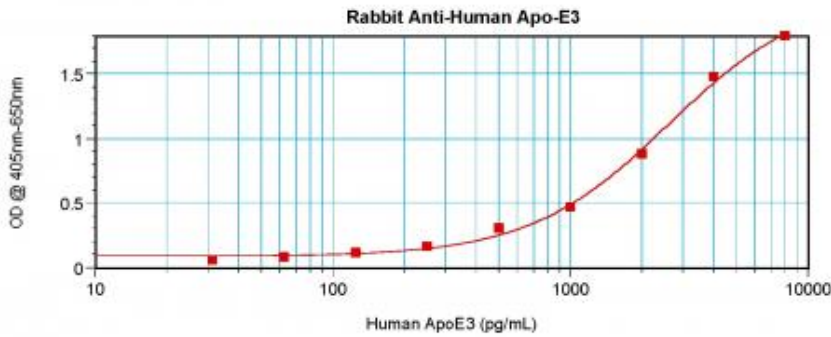


[View online »](#)

Product images:



To detect hApoE3 by sandwich ELISA (using 100 ul/well antibody solution) a concentration of 0.5 - 2.0 ug/ml of this antibody is required. This antigen affinity purified antibody, in conjunction with Biotinylated Anti-Human ApoE3 ([TA328252]) as a detection antibody, allows the detection of at least 0.2 - 0.4 ng/well of recombinant hApoE3.



To detect hApoE3 by sandwich ELISA (using 100 ul/well antibody solution) a concentration of 0.5 - 2.0 ug/ml of this antibody is required. This antigen affinity purified antibody, in conjunction with Biotinylated Anti-Human ApoE3 ([TA328252]) as a detection antibody, allows the detection of at least 0.2 - 0.4 ng/well of recombinant hApoE3.