

Product datasheet for **TA328249**

IL31 Rabbit Polyclonal Antibody

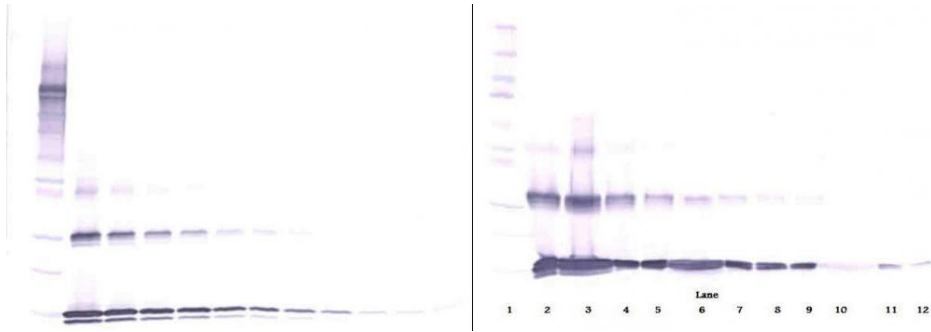
Product data:

Product Type:	Primary Antibodies
Applications:	ELISA, WB
Recommended Dilution:	WB: 0.1-0.2ug/mL, ELISA: 0.25-2ug/mL
Reactivity:	Human
Host:	Rabbit
Isotype:	IgG
Clonality:	Polyclonal
Immunogen:	E.coli derived Recombinant Human IL-31
Formulation:	A sterile filtered antibody solution was lyophilized from PBS, pH 7.2.
Purification:	Produced from sera of rabbits pre-immunized with highly pure (>98%) recombinant hIL-31. Anti-Human IL-31 specific antibody was purified by affinity chromatography employing immobilized hIL-31 matrix.
Conjugation:	Unconjugated
Storage:	Store at -20°C as received.
Stability:	Stable for 12 months from date of receipt.
Gene Name:	interleukin 31
Database Link:	NP_001014358 Entrez Gene 386653 Human Q6EBC2
Synonyms:	IL-31
Protein Families:	Secreted Protein, Transmembrane

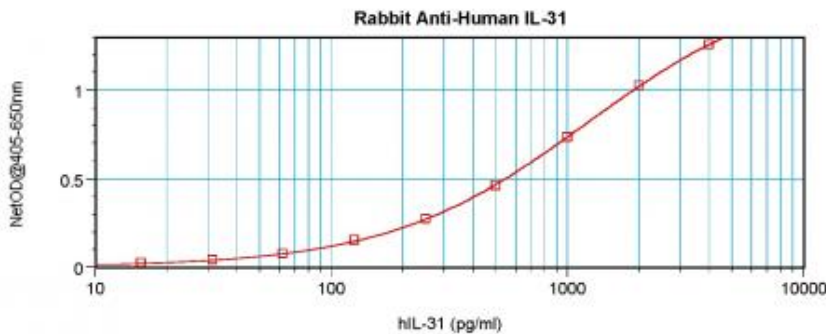


[View online »](#)

Product images:



To detect hIL-31 by sandwich ELISA (using 100 ul/well antibody solution) a concentration of 0.5 - 2.0 ug/ml of this antibody is required. This antigen affinity purified antibody, in conjunction with Biotinylated Anti-Human IL-31 ([TA328248]) as a detection antibody, allows the detection of at least 0.2 - 0.4 ng/well of recombinant hIL-31.



To detect hIL-31 by sandwich ELISA (using 100 ul/well antibody solution) a concentration of 0.5 - 2.0 ug/ml of this antibody is required. This antigen affinity purified antibody, in conjunction with Biotinylated Anti-Human IL-31 ([TA328248]) as a detection antibody, allows the detection of at least 0.2 - 0.4 ng/well of recombinant hIL-31.