

Product datasheet for **TA328244**

IL20 Goat Polyclonal Antibody

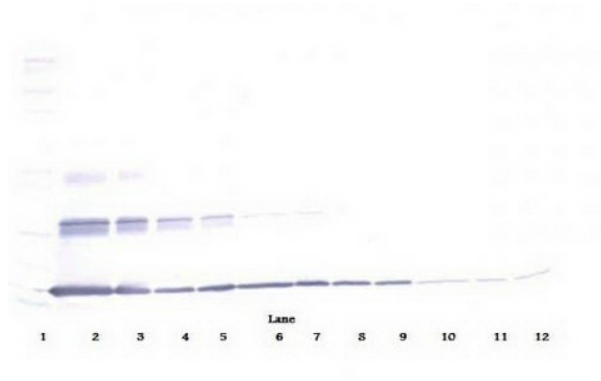
Product data:

| | |
|-----------------------|---|
| Product Type: | Primary Antibodies |
| Applications: | ELISA, WB |
| Recommended Dilution: | WB: 0.1-0.2ug/mL, ELISA: 0.25-2ug/mL |
| Reactivity: | Human |
| Host: | Goat |
| Isotype: | IgG |
| Clonality: | Polyclonal |
| Immunogen: | E.coli derived Recombinant Human IL-20 |
| Formulation: | A sterile filtered antibody solution was lyophilized from PBS, pH 7.2. |
| Purification: | Produced from sera of goats pre-immunized with highly pure (>98%) recombinant hIL-20. Anti-Human IL-20 specific antibody was purified by affinity chromatography employing immobilized hIL-20 matrix. |
| Conjugation: | Unconjugated |
| Storage: | Store at -20°C as received. |
| Stability: | Stable for 12 months from date of receipt. |
| Gene Name: | interleukin 20 |
| Database Link: | NP_061194 Entrez Gene 50604 Human Q9NYY1 |
| Synonyms: | IL-20; IL10D; ZCYTO10 |
| Protein Families: | Druggable Genome, Secreted Protein |
| Protein Pathways: | Cytokine-cytokine receptor interaction, Jak-STAT signaling pathway |

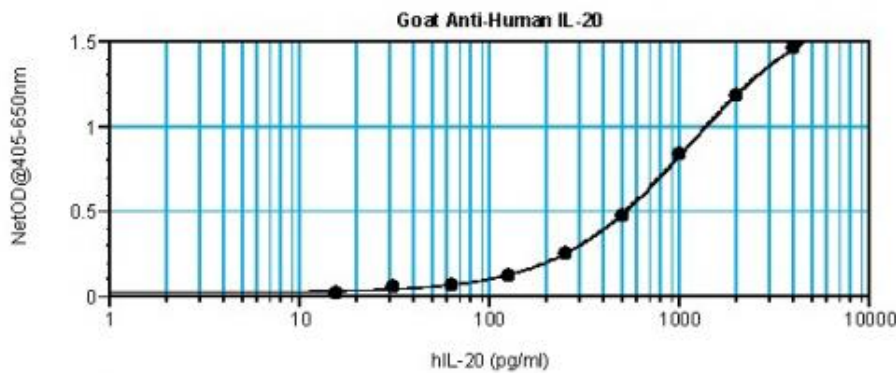


[View online »](#)

Product images:



To detect Human IL-20 by sandwich ELISA (using 100ul/well antibody solution) a concentration of 0.5 - 2.0 ug/ml of this antibody is required. This antigen affinity purified antibody, in conjunction with Biotinylated Anti-Human IL-20 ([TA328245]) as a detection antibody, allows the detection of at least 0.2 - 0.4 ng/well of recombinant Human IL-20.



To detect Human IL-20 by sandwich ELISA (using 100ul/well antibody solution) a concentration of 0.5 - 2.0 ug/ml of this antibody is required. This antigen affinity purified antibody, in conjunction with Biotinylated Anti-Human IL-20 ([TA328245]) as a detection antibody, allows the detection of at least 0.2 - 0.4 ng/well of recombinant Human IL-20.