

Product datasheet for **TA328242**

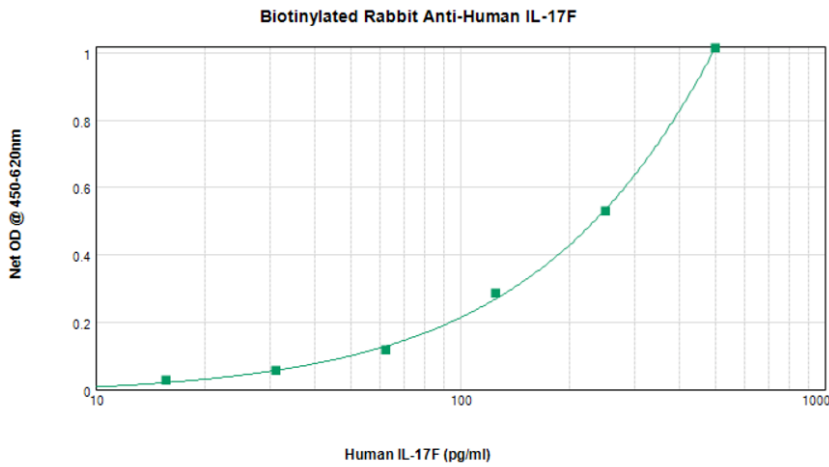
IL17F Rabbit Polyclonal Antibody

Product data:

Product Type:	Primary Antibodies
Applications:	E, ELISA
Recommended Dilution:	ELISA: 0.25 - 2 ug/ml WB: 0.1 - 0.2 ug/ml
Reactivity:	Human
Host:	Rabbit
Isotype:	IgG
Clonality:	Polyclonal
Immunogen:	E.coli derived Recombinant Human IL-17F
Formulation:	A sterile filtered antibody solution was lyophilized from PBS, pH 7.2.
Reconstitution Method:	Restore in sterile PBS + 0.1% BSA to 0.1-1.0 mg/ml
Concentration:	N/A
Purification:	Produced from sera of rabbits pre-immunized with highly pure (>98%) recombinant hIL-17F. Anti-Human IL-17F specific antibody was purified by affinity chromatography and then biotinylated.
Conjugation:	Biotin
Storage:	Store at -20°C as received.
Stability:	Stable for 12 months from date of receipt.
Gene Name:	interleukin 17F
Database Link:	NP_443104 Entrez Gene 112744 Human Q96PD4
Synonyms:	CANDF6; IL-17F; ML-1; ML1
Protein Families:	Druggable Genome, Secreted Protein



[View online »](#)

Product images:


To detect hIL-17F by sandwich ELISA (using 100 μ l/well antibody solution) a concentration of 0.25 – 1.0 μ g/ml of this antibody is required. The biotinylated polyclonal antibody (TA328242) in conjunction with the unconjugated polyclonal Anti-Human IL-17F ([TA328243]) as a capture antibody, allows the detection of at least 0.2 – 0.4 ng/well of recombinant hIL-17F.