

Product datasheet for **TA328241**

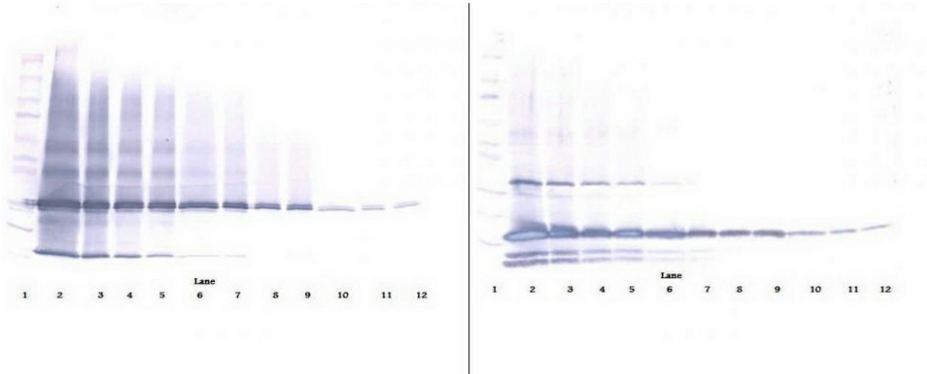
IL17E (IL25) Rabbit Polyclonal Antibody

Product data:

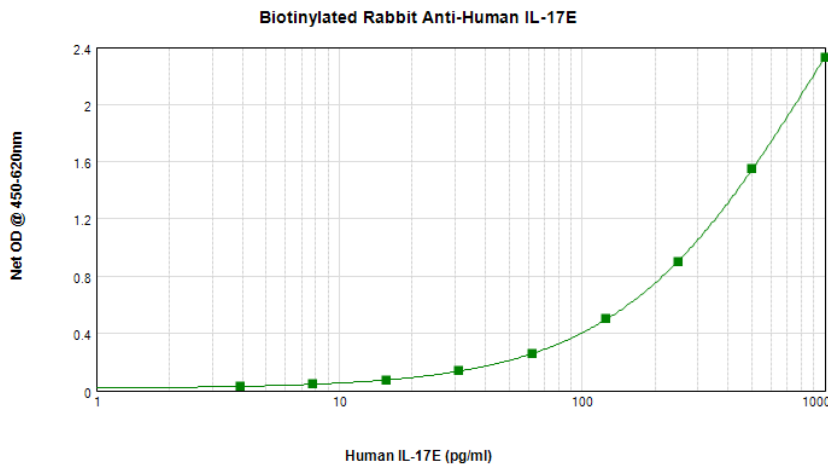
Product Type:	Primary Antibodies
Applications:	ELISA, WB
Recommended Dilution:	ELISA: 0.5 - 2 ug/ml WB: 0.1 - 0.2 ug/ml
Reactivity:	Human
Host:	Rabbit
Isotype:	IgG
Clonality:	Polyclonal
Immunogen:	E.coli derived Recombinant Human IL-17E
Formulation:	A sterile filtered antibody solution was lyophilized from PBS, pH 7.2.
Purification:	Produced from sera of rabbits pre-immunized with highly pure (>98%) recombinant hIL-17E. Anti-Human IL-17E specific antibody was purified by affinity chromatography employing immobilized hIL-17E matrix.
Conjugation:	Unconjugated
Storage:	Store at -20°C as received.
Stability:	Stable for 12 months from date of receipt.
Gene Name:	interleukin 25
Database Link:	NP_758525 Entrez Gene 64806 Human Q9H293
Synonyms:	IL17E
Protein Families:	Druggable Genome, Secreted Protein, Transmembrane
Protein Pathways:	Cytokine-cytokine receptor interaction



[View online »](#)

Product images:


To detect Human IL-17E by Western Blot analysis this antibody can be used at a concentration of 0.1 - 0.2 µg/ml. When used in conjunction with compatible secondary reagents the detection limit for recombinant Human IL-17E is 1.5 - 3.0 ng/lane, under either reducing or non-reducing conditions.



To detect Human IL-17E by sandwich ELISA (using 100µl/well antibody solution) a concentration of 0.5 - 2.0 µg/ml of this antibody is required. The antigen affinity purified antibody,TA328241, in conjunction with the biotinylated Anti-Human IL-17E ([TA328240]) as a detection antibody, allows the detection of at least 0.2 - 0.4 ng/well of recombinant Human IL-17E.