

Product datasheet for **TA328217**

IL6 Rabbit Polyclonal Antibody

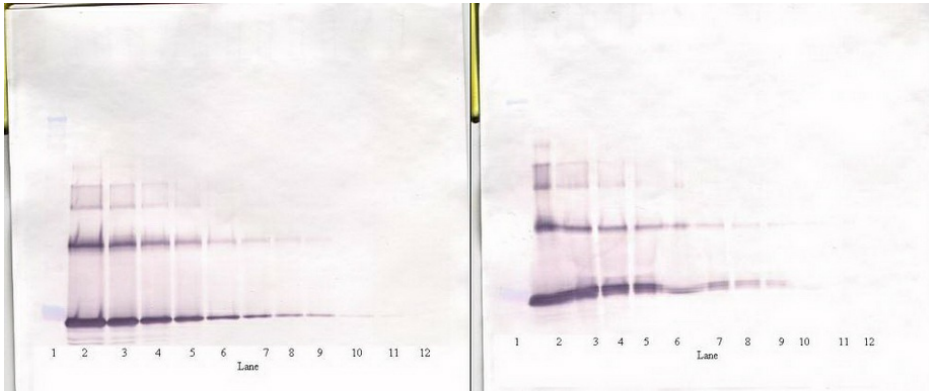
Product data:

Product Type:	Primary Antibodies
Applications:	ELISA, IHC, WB
Recommended Dilution:	WB: 0.1-0.2ug/mL, ELISA: 0.25-2ug/mL, IHC: 0.25ug/mL - 1mg/mL
Reactivity:	Human
Host:	Rabbit
Isotype:	IgG
Clonality:	Polyclonal
Immunogen:	E.coli derived Recombinant Human IL-6
Formulation:	A sterile filtered antibody solution was lyophilized from PBS, pH 7.2.
Purification:	Produced from sera of rabbits pre-immunized with highly pure recombinant Human IL-6. Anti-Human IL-6 specific antibody was purified by affinity chromatography employing immobilized Human IL-6 matrix.
Conjugation:	Unconjugated
Storage:	Store at -20°C as received.
Stability:	Stable for 12 months from date of receipt.
Gene Name:	interleukin 6
Database Link:	NP_000591 Entrez Gene 3569 Human P05231
Synonyms:	BSF-2; BSF2; CDF; HGF; HSF; IFN-beta-2; IFNB2; IL-6
Note:	Neutralization: To yield one-half maximal inhibition [ND50] of the biological activity of Human IL-6 (1.0 ng/ml), a concentration of 0.20 - 0.40 <=ug/ml of this antibody is required.
Protein Families:	Druggable Genome, Secreted Protein
Protein Pathways:	Cytokine-cytokine receptor interaction, Cytosolic DNA-sensing pathway, Graft-versus-host disease, Hematopoietic cell lineage, Hypertrophic cardiomyopathy (HCM), Jak-STAT signaling pathway, NOD-like receptor signaling pathway, Pathways in cancer, Prion diseases, Toll-like receptor signaling pathway

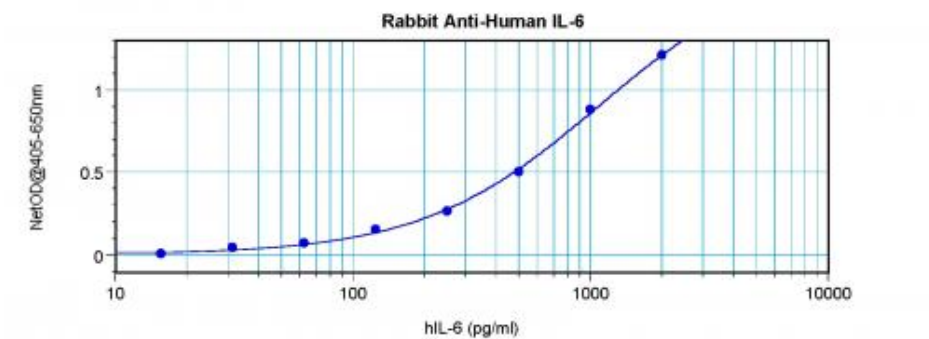


[View online »](#)

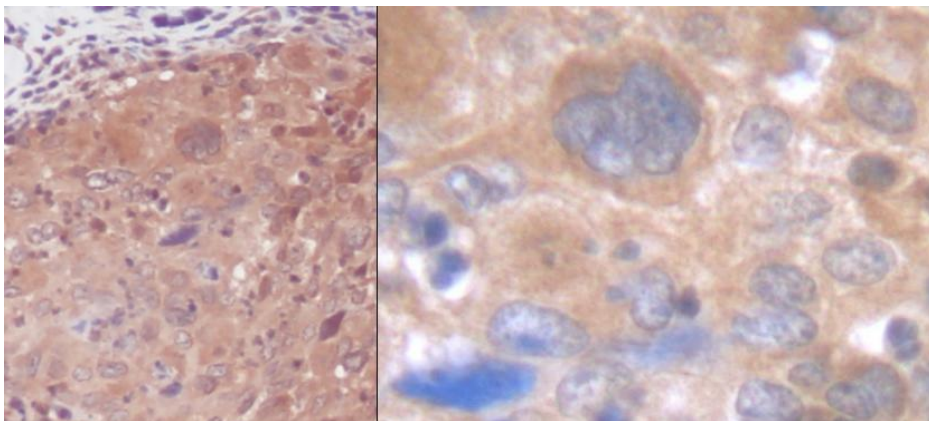
Product images:



To detect Human IL-6 by sandwich ELISA (using 100 ul/well antibody solution) a concentration of 0.5 - 2.0 ug/ml of this antibody is required. This antigen affinity purified antibody, in conjunction with Biotinylated Anti-Human IL-6 (TA328217) as a detection antibody, allows the detection of at least 0.2 - 0.4 ng/well of recombinant Human IL-6.



To detect Human IL-6 by sandwich ELISA (using 100 ul/well antibody solution) a concentration of 0.5 - 2.0 ug/ml of this antibody is required. This antigen affinity purified antibody, in conjunction with Biotinylated Anti-Human IL-6 (TA328217) as a detection antibody, allows the detection of at least 0.2 - 0.4 ng/well of recombinant Human IL-6.



To detect Human IL-6 by sandwich ELISA (using 100 ul/well antibody solution) a concentration of 0.5 - 2.0 ug/ml of this antibody is required. This antigen affinity purified antibody, in conjunction with Biotinylated Anti-Human IL-6 (TA328217) as a detection antibody, allows the detection of at least 0.2 - 0.4 ng/well of recombinant Human IL-6.