

## Product datasheet for **TA328200**

### Ccdc89 Rabbit Polyclonal Antibody

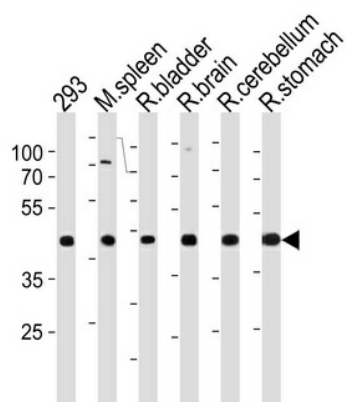
#### Product data:

Product Type:	Primary Antibodies
Applications:	WB
Recommended Dilution:	WB: 1:1000
Reactivity:	Human, Mouse, Rat
Host:	Rabbit
Isotype:	Ig
Clonality:	Polyclonal
Immunogen:	This Rat Ccdc89 antibody is generated from rabbits immunized with a KLH conjugated synthetic peptide between 114-145 amino acids from the Central region of rat Ccdc89.
Formulation:	PBS with 0.09% (W/V) sodium azide
Concentration:	lot specific
Purification:	This antibody is purified through a protein A column, followed by peptide affinity purification.
Conjugation:	Unconjugated
Storage:	Store at -20°C as received.
Stability:	Stable for 12 months from date of receipt.
Gene Name:	coiled-coil domain containing 89
Database Link:	<a href="#">NP_001128305</a> <a href="#">Entrez Gene 70054 Mouse</a> <a href="#">Entrez Gene 220388 Human</a> <a href="#">Entrez Gene 293107 Rat</a> <a href="#">B2RZ86</a>
Background:	The function of this protein is unknown.
Synonyms:	BOIP; FLJ38159



[View online »](#)

## Product images:



Rat Ccdc89 Antibody (Center) (Cat. #TA328200) western blot analysis in 293 cell line, mouse spleen, rat bladder, brain, cerebellum and stomach tissue lysates (35ug/lane). This demonstrates the rat Ccdc89 antibody detected the rat Ccdc89 protein (arrow).