

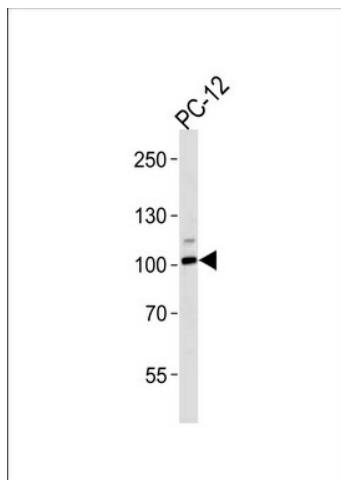
Product datasheet for **TA328196S**

Atp1a1 Rabbit Polyclonal Antibody

Product data:

Product Type:	Primary Antibodies
Applications:	WB
Recommended Dilution:	WB: 1:1000
Reactivity:	Rat
Host:	Rabbit
Isotype:	Ig
Clonality:	Polyclonal
Immunogen:	This Rat Atp1a1 antibody is generated from a rabbit immunized with a KLH conjugated synthetic peptide between 1-30 amino acids from Rat Atp1a1.
Formulation:	PBS with 0.09% (W/V) sodium azide
Concentration:	lot specific
Purification:	This antibody is purified through a protein A column, followed by peptide affinity purification.
Conjugation:	Unconjugated
Storage:	Store at -20°C as received.
Stability:	Stable for 12 months from date of receipt.
Gene Name:	ATPase Na ⁺ /K ⁺ transporting subunit alpha 1
Database Link:	NP_036636 Entrez Gene 24211 Rat P06685
Background:	This is the catalytic component of the active enzyme, which catalyzes the hydrolysis of ATP coupled with the exchange of sodium and potassium ions across the plasma membrane. This action creates the electrochemical gradient of sodium and potassium ions, providing the energy for active transport of various nutrients.
Synonyms:	MGC3285; MGC51750

[View online »](#)

Product images:

Western blot analysis of lysate from PC-12 cell line, using Rat Atp1a1 Antibody (S23) (Cat. # [TA328196]).[TA328196] was diluted at 1:1000 at each lane. A goat anti-rabbit IgG H&L (HRP) at 1:5000 dilution was used as the secondary antibody. Lysate at 35ug per lane.