

Product datasheet for **TA328195**

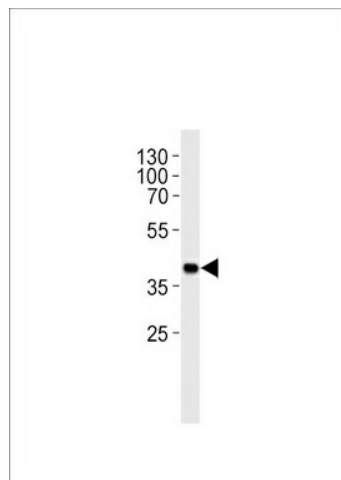
Sh2d5 Rabbit Polyclonal Antibody

Product data:

Product Type:	Primary Antibodies
Applications:	WB
Recommended Dilution:	WB: 1:1000
Reactivity:	Mouse
Host:	Rabbit
Isotype:	Ig
Clonality:	Polyclonal
Immunogen:	This Mouse Sh2d5 antibody is generated from rabbits immunized with a KLH conjugated synthetic peptide between 200-230 amino acids from the Central region of mouse Sh2d5.
Formulation:	PBS with 0.09% (W/V) sodium azide
Concentration:	lot specific
Purification:	This antibody is purified through a protein A column, followed by peptide affinity purification.
Conjugation:	Unconjugated
Storage:	Store at -20°C as received.
Stability:	Stable for 12 months from date of receipt.
Gene Name:	SH2 domain containing 5
Database Link:	NP_001093101 Entrez Gene 230863 Mouse Q8JZW5
Background:	The function of this protein is unknown.
Synonyms:	FLJ41242; FLJ41847; FLJ42879



[View online »](#)

Product images:

Mouse Sh2d5 Antibody (Center) (Cat. #TA328195) western blot analysis in mouse heart tissue lysates (35ug/lane). This demonstrates the mouse Sh2d5 antibody detected the mouse Sh2d5 protein (arrow).