

## Product datasheet for TA328194S

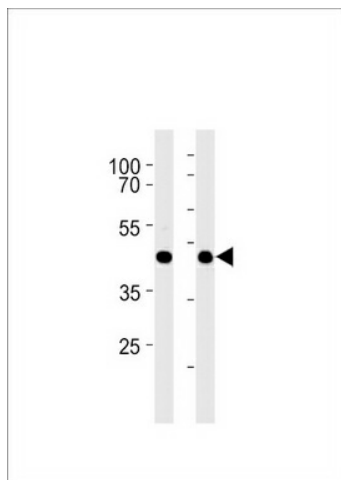
### Gpr68 Rabbit Polyclonal Antibody

#### Product data:

Product Type:	Primary Antibodies
Applications:	WB
Recommended Dilution:	WB: 1:1000
Reactivity:	Mouse (Predicted: Human, Bovine)
Host:	Rabbit
Isotype:	Ig
Clonality:	Polyclonal
Immunogen:	This Mouse Gpr68 antibody is generated from rabbits immunized with a KLH conjugated synthetic peptide between 200-225 amino acids from the Central region of mouse Gpr68.
Formulation:	PBS with 0.09% (W/V) sodium azide
Concentration:	lot specific
Purification:	This antibody is purified through a protein A column, followed by peptide affinity purification.
Conjugation:	Unconjugated
Storage:	Store at -20°C as received.
Stability:	Stable for 12 months from date of receipt.
Gene Name:	G protein-coupled receptor 68
Database Link:	<a href="#">NP_780702</a> <a href="#">Entrez Gene 8111 Human</a> <a href="#">Entrez Gene 238377 Mouse</a> <a href="#">Q8BFQ3</a>
Background:	Proton-sensing receptor involved in pH homeostasis. May represents an osteoblastic pH sensor regulating cell-mediated responses to acidosis in bone. Mediates its action by association with G proteins that stimulates inositol phosphate (IP) production or Ca(2+) mobilization. The receptor is almost silent at pH 7.8 but fully activated at pH 6.8. Function also as a metastasis suppressor gene in prostate cancer.
Synonyms:	GPR12A; OGR1


[View online »](#)

## Product images:



Mouse Gpr68 Antibody (Center) (Cat. # [TA328194]) western blot analysis in mouse liver and heart tissue lysates (35ug/lane). This demonstrates the Mouse Gpr68 antibody detected the Mouse Gpr68 protein (arrow).