

Product datasheet for **TA328191**

NPIPL2 (NPIPB15) Rabbit Polyclonal Antibody

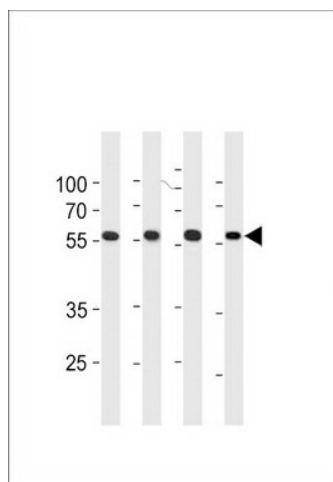
Product data:

Product Type:	Primary Antibodies
Applications:	WB
Recommended Dilution:	WB: 1:1000
Reactivity:	Human
Host:	Rabbit
Isotype:	Ig
Clonality:	Polyclonal
Immunogen:	This NPIPL2 antibody is generated from rabbits immunized with a KLH conjugated synthetic peptide between 300-327 amino acids from the C-terminal region of human NPIPL2.
Formulation:	PBS with 0.09% (W/V) sodium azide
Concentration:	lot specific
Purification:	This antibody is purified through a protein A column, followed by peptide affinity purification.
Conjugation:	Unconjugated
Storage:	Store at -20°C as received.
Stability:	Stable for 12 months from date of receipt.
Gene Name:	nuclear pore complex interacting protein family member B15
Database Link:	NP_001018069 Entrez Gene 440348 Human A6NHN6
Background:	The function of this protein is unknown.
Synonyms:	A-761H5.4



[View online »](#)

Product images:



NPIPL2 Antibody (C-term) (Cat. #TA328191) western blot analysis in K562, WiDr, MDA-MB453, NCI-H460 cell line lysates (35ug/lane). This demonstrates the NPIPL2 antibody detected the NPIPL2 protein (arrow).