

Product datasheet for **TA328190**

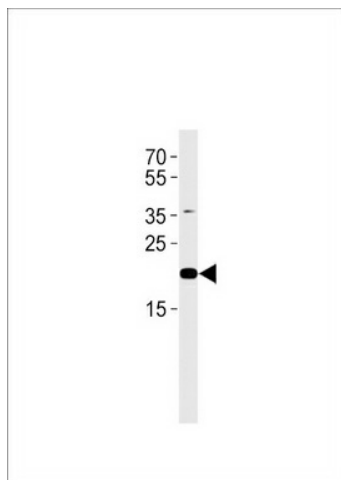
C2orf74 Rabbit Polyclonal Antibody

Product data:

Product Type:	Primary Antibodies
Applications:	WB
Recommended Dilution:	WB: 1:1000
Reactivity:	Human
Host:	Rabbit
Isotype:	Ig
Clonality:	Polyclonal
Immunogen:	This C2orf74 antibody is generated from rabbits immunized with a KLH conjugated synthetic peptide between 164-194 amino acids from the C-terminal region of human C2orf74.
Formulation:	PBS with 0.09% (W/V) sodium azide
Concentration:	lot specific
Purification:	This antibody is purified through a protein A column, followed by peptide affinity purification.
Conjugation:	Unconjugated
Storage:	Store at -20°C as received.
Stability:	Stable for 12 months from date of receipt.
Gene Name:	chromosome 2 open reading frame 74
Database Link:	NP_001137432 Entrez Gene 339804 Human A8MZ97
Background:	The function of this protein is unknown.
Synonyms:	C2orf74



[View online »](#)

Product images:

C2orf74 Antibody (C-term) (Cat. #TA328190) western blot analysis in human placenta tissue lysates (35ug/lane). This demonstrates the C2orf74 antibody detected the C2orf74 protein (arrow).