

## Product datasheet for **TA328186**

### ACE2 Mouse Monoclonal Antibody [Clone ID: 881CT16.4.4] (Angiotensin Converting Enzyme 2)

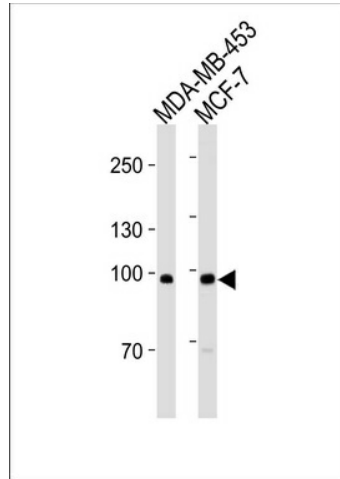
#### Product data:

Product Type:	Primary Antibodies
Clone Name:	881CT16.4.4
Applications:	WB
Recommended Dilution:	WB: 1:2000
Reactivity:	Human
Host:	Mouse
Isotype:	IgM
Clonality:	Monoclonal
Immunogen:	Purified His-tagged ACE2 protein was used to produced this monoclonal antibody.
Formulation:	crude ascites with 0.09% (W/V) sodium azide
Purification:	Mouse monoclonal antibody supplied in crude ascites with 0.09% (W/V) sodium azide.
Conjugation:	Unconjugated
Storage:	Store at -20°C as received.
Stability:	Stable for 12 months from date of receipt.
Gene Name:	angiotensin I converting enzyme 2
Database Link:	<a href="#">NP_068576</a> <a href="#">Entrez Gene 59272 Human</a> <a href="#">Q9BYF1</a>
Background:	Carboxypeptidase which converts angiotensin I to angiotensin 1-9, a peptide of unknown function, and angiotensin II to angiotensin 1-7, a vasodilator. Also able to hydrolyze apelin-13 and dynorphin-13 with high efficiency. May be an important regulator of heart function. In case of human coronaviruses SARS and HCoV-NL63 infections, serve as functional receptor for the spike glycoprotein of both coronaviruses.
Synonyms:	ACEH
Protein Families:	Druggable Genome, Secreted Protein, Transmembrane
Protein Pathways:	Renin-angiotensin system



[View online »](#)

## Product images:



ACE2 (SARS Receptor) Antibody (Center) (Cat. #TA328186) western blot analysis in MDA-MB-453, MCF-7 cell line lysates (35ug/lane). This demonstrates the ACE2 (SARS Receptor) antibody detected the ACE2 (SARS Receptor) protein (arrow).