

Product datasheet for **TA328185**

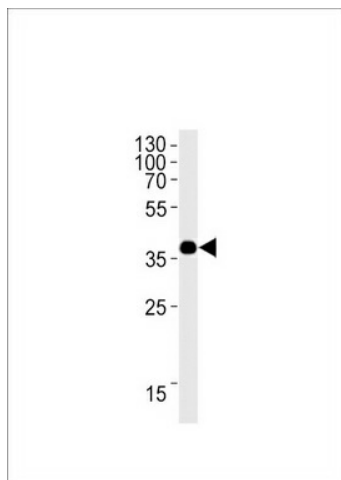
OR1L3 Rabbit Polyclonal Antibody

Product data:

Product Type:	Primary Antibodies
Applications:	WB
Recommended Dilution:	WB: 1:1000
Reactivity:	Human
Host:	Rabbit
Isotype:	Ig
Clonality:	Polyclonal
Immunogen:	This OR1L3 antibody is generated from rabbits immunized with a KLH conjugated synthetic peptide between 290-320 amino acids from the C-terminal region of human OR1L3.
Formulation:	PBS with 0.09% (W/V) sodium azide
Concentration:	lot specific
Purification:	This antibody is purified through a protein A column, followed by peptide affinity purification.
Conjugation:	Unconjugated
Storage:	Store at -20°C as received.
Stability:	Stable for 12 months from date of receipt.
Gene Name:	olfactory receptor family 1 subfamily L member 3
Database Link:	NP_001005234 Entrez Gene 26735 Human Q8NH93
Background:	Odorant receptor (Potential).
Synonyms:	OR9-28; OR9-D
Protein Families:	Transmembrane
Protein Pathways:	Olfactory transduction



[View online »](#)

Product images:

OR1L3 Antibody (C-term) (Cat. #TA328185)
western blot analysis in HepG2 cell line lysates
(35ug/lane). This demonstrates the OR1L3
antibody detected the OR1L3 protein (arrow).