

Product datasheet for **TA328181**

Filamin A (FLNA) Mouse Monoclonal Antibody [Clone ID: 1273CT424.104.153]

Product data:

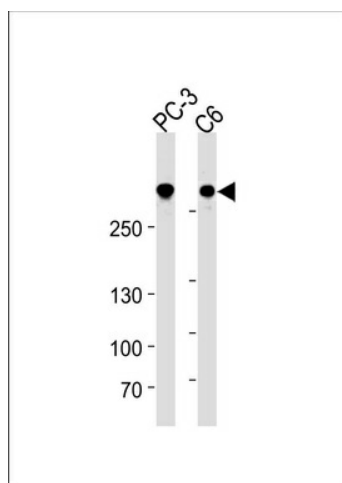
Product Type:	Primary Antibodies
Clone Name:	1273CT424.104.153
Applications:	WB
Recommended Dilution:	WB: 1:1000
Reactivity:	Human, Rat
Host:	Mouse
Isotype:	IgG1
Clonality:	Monoclonal
Immunogen:	Purified His-tagged FLNA protein was used to produced this monoclonal antibody.
Formulation:	PBS with 0.09% (W/V) sodium azide
Concentration:	lot specific
Purification:	This antibody is purified through a protein G column, followed by dialysis against PBS.
Conjugation:	Unconjugated
Storage:	Store at -20°C as received.
Stability:	Stable for 12 months from date of receipt.
Gene Name:	filamin A
Database Link:	NP_001447 Entrez Gene 293860 Rat Entrez Gene 2316 Human P21333
Background:	Promotes orthogonal branching of actin filaments and links actin filaments to membrane glycoproteins. Anchors various transmembrane proteins to the actin cytoskeleton and serves as a scaffold for a wide range of cytoplasmic signaling proteins. Interaction with FLNA may allow neuroblast migration from the ventricular zone into the cortical plate. Tethers cell surface-localized furin, modulates its rate of internalization and directs its intracellular trafficking (By similarity). Involved in ciliogenesis.
Synonyms:	ABP-280; ABPX; CSBS; CVD1; FLN; FLN-A; FLN1; FMD; MNS; NHBP; OPD; OPD1; OPD2; XLVD; XMVD



[View online »](#)

Protein Pathways: Focal adhesion, MAPK signaling pathway

Product images:



FLNA Antibody (Cat. #TA328181) western blot analysis in PC-3⁻ rat C6 cell line lysates (35ug/lane). This demonstrates the FLNA antibody detected the FLNA protein (arrow).