

## Product datasheet for **TA328164**

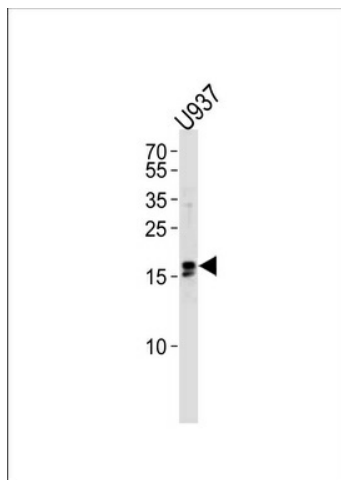
### **IQCF6 Rabbit Polyclonal Antibody**

#### **Product data:**

<b>Product Type:</b>	Primary Antibodies
<b>Applications:</b>	WB
<b>Recommended Dilution:</b>	WB: 1:1000
<b>Reactivity:</b>	Human
<b>Host:</b>	Rabbit
<b>Isotype:</b>	Ig
<b>Clonality:</b>	Polyclonal
<b>Immunogen:</b>	This IQCF6 antibody is generated from a rabbit immunized with a KLH conjugated synthetic peptide between 1-30 amino acids from the N-terminal region of human IQCF6.
<b>Formulation:</b>	PBS with 0.09% (W/V) sodium azide
<b>Concentration:</b>	lot specific
<b>Purification:</b>	This antibody is purified through a protein A column, followed by peptide affinity purification.
<b>Conjugation:</b>	Unconjugated
<b>Storage:</b>	Store at -20°C as received.
<b>Stability:</b>	Stable for 12 months from date of receipt.
<b>Gene Name:</b>	IQ motif containing F6
<b>Database Link:</b>	<a href="#">NP_001137305</a> <a href="#">Entrez Gene 440956 Human</a> <a href="#">A8MYZ5</a>
<b>Background:</b>	The function of this protein is unknown.
<b>Synonyms:</b>	IQ motif containing F6



[View online »](#)

**Product images:**

Western blot analysis of lysate from U937 cell line, using IQCF6 Antibody (N-term) (Cat. #TA328164).TA328164 was diluted at 1:1000 at each lane. A goat anti-rabbit IgG H&L (HRP) at 1:5000 dilution was used as the secondary antibody.Lysate at 35ug per lane.