

Product datasheet for **TA328163S**

p53 (TP53) Mouse Monoclonal Antibody [Clone ID: 1227CT355.106.153]

Product data:

Product Type:	Primary Antibodies
Clone Name:	1227CT355.106.153
Applications:	WB
Recommended Dilution:	WB: 1:1000
Reactivity:	Human
Host:	Mouse
Isotype:	IgG1, kappa
Clonality:	Monoclonal
Immunogen:	Purified His-tagged TP53 protein was used to produced this monoclonal antibody.
Formulation:	PBS with 0.09% (W/V) sodium azide
Concentration:	lot specific
Purification:	This antibody is purified through a protein G column, followed by dialysis against PBS.
Conjugation:	Unconjugated
Storage:	Store at -20°C as received.
Stability:	Stable for 12 months from date of receipt.
Gene Name:	tumor protein p53
Database Link:	NP_001119586 Entrez Gene 7157 Human P04637



[View online »](#)

Background:

Acts as a tumor suppressor in many tumor types; induces growth arrest or apoptosis depending on the physiological circumstances and cell type. Involved in cell cycle regulation as a trans-activator that acts to negatively regulate cell division by controlling a set of genes required for this process. One of the activated genes is an inhibitor of cyclin-dependent kinases. Apoptosis induction seems to be mediated either by stimulation of BAX and FAS antigen expression, or by repression of Bcl-2 expression. Implicated in Notch signaling cross-over. Prevents CDK7 kinase activity when associated to CAK complex in response to DNA damage, thus stopping cell cycle progression. Isoform 2 enhances the transactivation activity of isoform 1 from some but not all TP53-inducible promoters. Isoform 4 suppresses transactivation activity and impairs growth suppression mediated by isoform 1. Isoform 7 inhibits isoform 1-mediated apoptosis.

Synonyms:

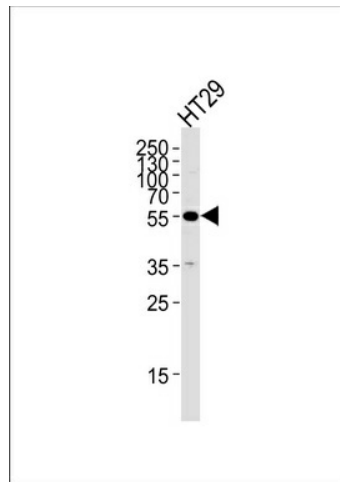
BCC7; LFS1; P53; TRP53

Protein Families:

Druggable Genome, Stem cell - Pluripotency, Transcription Factors

Protein Pathways:

Amyotrophic lateral sclerosis (ALS), Apoptosis, Basal cell carcinoma, Bladder cancer, Cell cycle, Chronic myeloid leukemia, Colorectal cancer, Endometrial cancer, Glioma, Huntington's disease, MAPK signaling pathway, Melanoma, Neurotrophin signaling pathway, Non-small cell lung cancer, p53 signaling pathway, Pancreatic cancer, Pathways in cancer, Prostate cancer, Small cell lung cancer, Thyroid cancer, Wnt signaling pathway

Product images:

TP53 Antibody (N-term) (Cat. #[TA328163])
western blot analysis in HT29 cell line lysates
(35ug/lane). This demonstrates the TP53 antibody
detected the TP53 protein (arrow).