

## Product datasheet for **TA328161S**

### BLMH Rabbit Polyclonal Antibody

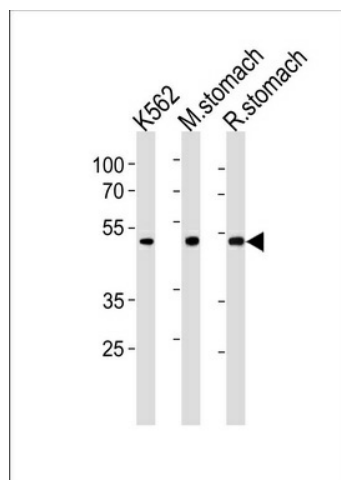
#### Product data:

Product Type:	Primary Antibodies
Applications:	WB
Recommended Dilution:	WB: 1:1000
Reactivity:	Human, Mouse, Rat (Predicted: Rabbit)
Host:	Rabbit
Isotype:	Ig
Clonality:	Polyclonal
Immunogen:	This BLMH antibody is generated from rabbits immunized with a KLH conjugated synthetic peptide between 212-242 amino acids from the Central region of human BLMH.
Formulation:	PBS with 0.09% (W/V) sodium azide
Concentration:	lot specific
Purification:	This antibody is purified through a protein A column, followed by peptide affinity purification.
Conjugation:	Unconjugated
Storage:	Store at -20°C as received.
Stability:	Stable for 12 months from date of receipt.
Gene Name:	bleomycin hydrolase
Database Link:	<a href="#">NP_000377</a> <a href="#">Entrez Gene 104184 Mouse</a> <a href="#">Entrez Gene 287552 Rat</a> <a href="#">Entrez Gene 642 Human</a> <a href="#">Q13867</a>
Background:	The normal physiological role of BLM hydrolase is unknown, but it catalyzes the inactivation of the antitumor drug BLM (a glycopeptide) by hydrolyzing the carboxamide bond of its B-aminoalaninamide moiety thus protecting normal and malignant cells from BLM toxicity (By similarity).
Synonyms:	BH; BMH
Protein Families:	Druggable Genome, Protease



[View online »](#)

## Product images:



BLMH Antibody (Center) (Cat. #[TA328161]) western blot analysis in K562 cell line, mouse stomach and rat stomach tissue lysates (35ug/lane). This demonstrates the BLMH antibody detected the BLMH protein (arrow).