

Product datasheet for **TA328160S**

Prolactin Receptor (PRLR) Rabbit Polyclonal Antibody

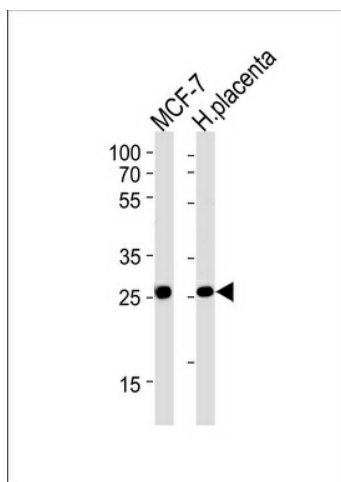
Product data:

Product Type:	Primary Antibodies
Applications:	WB
Recommended Dilution:	WB: 1:1000
Reactivity:	Human
Host:	Rabbit
Isotype:	Ig
Clonality:	Polyclonal
Immunogen:	This PRLR antibody is generated from rabbits immunized with a KLH conjugated synthetic peptide between 147-179 amino acids from the Central region of human PRLR.
Formulation:	PBS with 0.09% (W/V) sodium azide
Concentration:	lot specific
Purification:	This antibody is purified through a protein A column, followed by peptide affinity purification.
Conjugation:	Unconjugated
Storage:	Store at -20°C as received.
Stability:	Stable for 12 months from date of receipt.
Gene Name:	prolactin receptor
Database Link:	NP_000940 Entrez Gene 5618 Human P16471
Background:	This is a receptor for the anterior pituitary hormone prolactin (PRL). Isoform 4 is unable to transduce prolactin signaling. Isoform 6 is unable to transduce prolactin signaling.
Synonyms:	HPRL; hPRLrI; MFAB
Protein Families:	Druggable Genome, Transmembrane
Protein Pathways:	Cytokine-cytokine receptor interaction, Jak-STAT signaling pathway, Neuroactive ligand-receptor interaction



[View online »](#)

Product images:



PRLR Antibody (Center) (Cat. #TA328160])
western blot analysis in MCF-7 cell line and
human placenta tissue lysates (35ug/lane). This
demonstrates the PRLR antibody detected the
PRLR protein (arrow).