

## Product datasheet for **TA328159S**

### SLC25A25 Rabbit Polyclonal Antibody

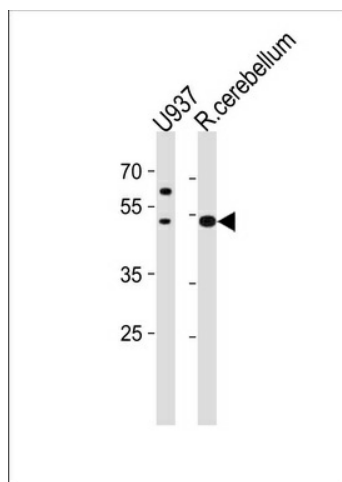
#### Product data:

Product Type:	Primary Antibodies
Applications:	WB
Recommended Dilution:	WB: 1:1000
Reactivity:	Human, Rat (Predicted: Mouse, Zebrafish, Bovine, Xenopus)
Host:	Rabbit
Isotype:	Ig
Clonality:	Polyclonal
Immunogen:	This SLC25A25 antibody is generated from rabbits immunized with a KLH conjugated synthetic peptide between 63-93 amino acids from the N-terminal region of human SLC25A25.
Formulation:	PBS with 0.09% (W/V) sodium azide
Concentration:	lot specific
Purification:	This antibody is purified through a protein A column, followed by peptide affinity purification.
Conjugation:	Unconjugated
Storage:	Store at -20°C as received.
Stability:	Stable for 12 months from date of receipt.
Gene Name:	solute carrier family 25 member 25
Database Link:	<a href="#">NP_001006644</a> <a href="#">Entrez Gene 227731 Mouse</a> <a href="#">Entrez Gene 246771 Rat</a> <a href="#">Entrez Gene 114789 Human</a> <a href="#">Q6KCM7</a>
Background:	Calcium-dependent mitochondrial solute carrier. Mitochondrial solute carriers shuttle metabolites, nucleotides, and cofactors through the mitochondrial inner membrane. May act as a ATP-Mg/Pi exchanger that mediates the transport of Mg-ATP in exchange for phosphate, catalyzing the net uptake or efflux of adenine nucleotides into or from the mitochondria.
Synonyms:	KIAA1896; MCSC; MGC105138; MGC119514; MGC119515; MGC119516; MGC119517; PCSCL; RP11-395P17.4
Protein Families:	Druggable Genome



[View online »](#)

## Product images:



SLC25A25 Antibody (N-term) (Cat. #TA328159)) western blot analysis in U-937 cell line and rat cerebellum tissue lysates (35ug/lane). This demonstrates the SLC25A25 antibody detected the SLC25A25 protein (arrow).