

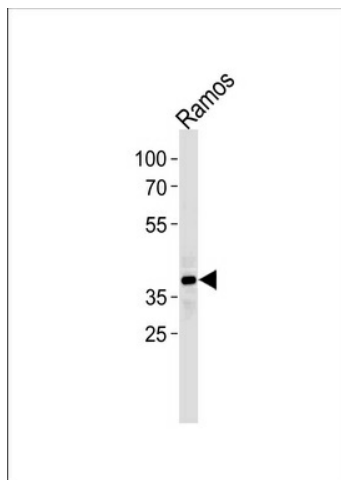
Product datasheet for TA328158S

PHF11 Rabbit Polyclonal Antibody

Product data:

Product Type:	Primary Antibodies
Applications:	WB
Recommended Dilution:	WB: 1:1000
Reactivity:	Human
Host:	Rabbit
Isotype:	Ig
Clonality:	Polyclonal
Immunogen:	This PHF11 antibody is generated from a rabbit immunized with a KLH conjugated synthetic peptide between 158-191 amino acids from the Central region of human PHF11.
Formulation:	PBS with 0.09% (W/V) sodium azide
Concentration:	lot specific
Purification:	This antibody is purified through a protein A column, followed by peptide affinity purification.
Conjugation:	Unconjugated
Storage:	Store at -20°C as received.
Stability:	Stable for 12 months from date of receipt.
Gene Name:	PHD finger protein 11
Database Link:	NP_001035534 Entrez Gene 51131 Human Q9UIL8
Background:	Positive regulator of Th1-type cytokine gene expression.
Synonyms:	APY; BCAP; IGEL; IGER; IGHER; NY-REN-34; NYREN34
Protein Families:	Druggable Genome, Transcription Factors


[View online »](#)

Product images:

Western blot analysis of lysate from Ramos cell line, using PHF11 Antibody (Center) (Cat. # [TA328158]). [TA328158] was diluted at 1:1000 at each lane. A goat anti-rabbit (HRP) at 1:5000 dilution was used as the secondary antibody. Lysate at 35ug.