

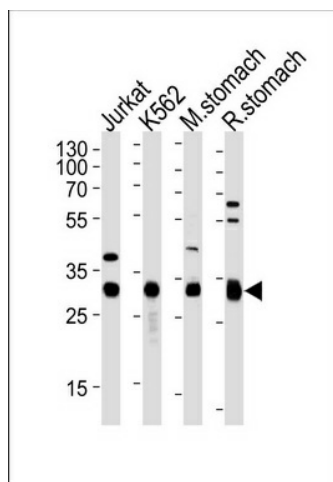
Product datasheet for TA328155S

ESD Rabbit Polyclonal Antibody

Product data:

Product Type:	Primary Antibodies
Applications:	WB
Recommended Dilution:	WB: 1:1000
Reactivity:	Human, Mouse, Rat (Predicted: Pig)
Host:	Rabbit
Isotype:	Ig
Clonality:	Polyclonal
Immunogen:	This ESD antibody is generated from a rabbit immunized with a KLH conjugated synthetic peptide between 68-102 amino acids from the Central region of human ESD.
Formulation:	PBS with 0.09% (W/V) sodium azide
Concentration:	lot specific
Purification:	This antibody is purified through a protein A column, followed by peptide affinity purification.
Conjugation:	Unconjugated
Storage:	Store at -20°C as received.
Stability:	Stable for 12 months from date of receipt.
Gene Name:	esterase D
Database Link:	NP_001975 Entrez Gene 13885 Mouse Entrez Gene 290401 Rat Entrez Gene 2098 Human P10768
Background:	Serine hydrolase involved in the detoxification of formaldehyde.
Synonyms:	FGH


[View online »](#)

Product images:

Western blot analysis of lysates from Jurkat, K562 cell line, mouse stomach and rat stomach tissue (from left to right), using ESD Antibody (Center) (Cat. #[TA328155]). [TA328155] was diluted at 1:1000 at each lane. A goat anti-rabbit (HRP) at 1:5000 dilution was used as the secondary antibody. Lysates at 35ug per lane.