

Product datasheet for TA328153S

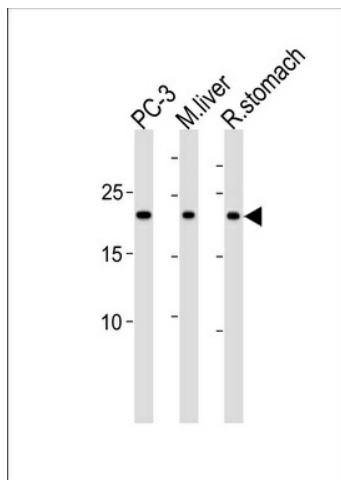
Proteasome subunit beta type 2 (PSMB2) Rabbit Polyclonal Antibody

Product data:

Product Type:	Primary Antibodies
Applications:	WB
Recommended Dilution:	WB: 1:1000
Reactivity:	Human, Mouse, Rat
Host:	Rabbit
Isotype:	Ig
Clonality:	Polyclonal
Immunogen:	This PSMB2 antibody is generated from rabbits immunized with a KLH conjugated synthetic peptide between 133-163 amino acids from the C-terminal region of human PSMB2.
Formulation:	PBS with 0.09% (W/V) sodium azide
Concentration:	lot specific
Purification:	This antibody is purified through a protein A column, followed by peptide affinity purification.
Conjugation:	Unconjugated
Storage:	Store at -20°C as received.
Stability:	Stable for 12 months from date of receipt.
Gene Name:	proteasome subunit beta 2
Database Link:	NP_002785 Entrez Gene 26445 Mouse Entrez Gene 29675 Rat Entrez Gene 5690 Human P49721
Background:	The proteasome is a multicatalytic proteinase complex which is characterized by its ability to cleave peptides with Arg, Phe, Tyr, Leu, and Glu adjacent to the leaving group at neutral or slightly basic pH. The proteasome has an ATP-dependent proteolytic activity. This subunit has a trypsin-like activity.
Synonyms:	HC7-I
Protein Families:	Druggable Genome, Protease
Protein Pathways:	Proteasome


[View online »](#)

Product images:



PSMB2 Antibody (C-term) (Cat. #TA328153])
western blot analysis in PC-3 cell line, mouse liver
and rat stomach tissue lysates (35ug/lane).This
demonstrates the PSMB2 antibody detected the
PSMB2 protein (arrow).