

Product datasheet for **TA328145**

DNA polymerase eta (POLH) Rabbit Polyclonal Antibody

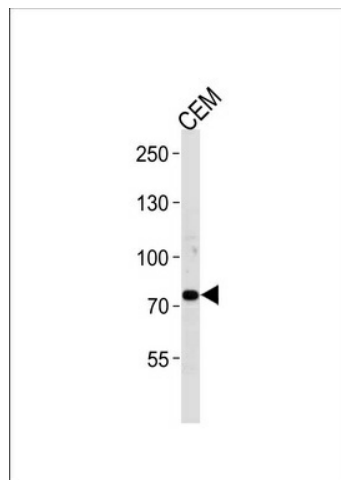
Product data:

Product Type:	Primary Antibodies
Applications:	WB
Recommended Dilution:	WB: 1:1000
Reactivity:	Human (Predicted: Mouse)
Host:	Rabbit
Isotype:	Ig
Clonality:	Polyclonal
Immunogen:	This POLH antibody is generated from a rabbit immunized with a KLH conjugated synthetic peptide between 68-92 amino acids from the N-terminal region of human POLH.
Formulation:	PBS with 0.09% (W/V) sodium azide
Concentration:	lot specific
Purification:	This antibody is purified through a protein A column, followed by peptide affinity purification.
Conjugation:	Unconjugated
Storage:	Store at -20°C as received.
Stability:	Stable for 12 months from date of receipt.
Gene Name:	polymerase (DNA) eta
Database Link:	NP_006493 Entrez Gene 80905 Mouse Entrez Gene 5429 Human Q9Y253
Background:	DNA polymerase specifically involved in DNA repair. Plays an important role in translesion synthesis, where the normal high fidelity DNA polymerases cannot proceed and DNA synthesis stalls. Plays an important role in the repair of UV-induced pyrimidine dimers. Depending on the context, it inserts the correct base, but causes frequent base transitions and transversions. May play a role in hypermutation at immunoglobulin genes. Forms a Schiff base with 5'-deoxyribose phosphate at abasic sites, but does not have lyase activity. Targets POLI to replication foci.
Synonyms:	RAD30; RAD30A; XP-V; XPV
Protein Families:	Druggable Genome



[View online »](#)

Product images:



POLH Antibody (N-term) (Cat.# TA328145)
western blot analysis in CEM cell lysate
(35ug/lane). This demonstrates that the POLH
antibody detected the POLH protein (arrow).