

Product datasheet for **TA328142S**

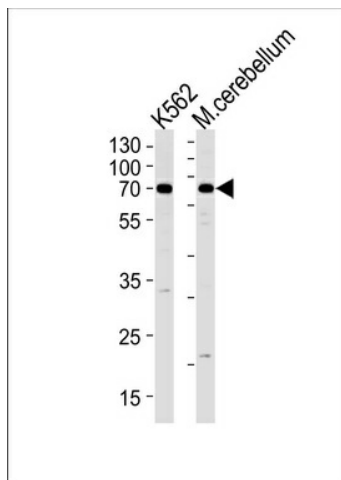
EPM2AIP1 Rabbit Polyclonal Antibody

Product data:

Product Type:	Primary Antibodies
Applications:	WB
Recommended Dilution:	WB: 1:1000
Reactivity:	Human, Mouse
Host:	Rabbit
Isotype:	Ig
Clonality:	Polyclonal
Immunogen:	This EPM2AIP1 antibody is generated from rabbits immunized with a KLH conjugated synthetic peptide between 39-62 amino acids from the N-terminal region of human EPM2AIP1.
Formulation:	PBS with 0.09% (W/V) sodium azide
Concentration:	lot specific
Purification:	This antibody is purified through a protein A column, followed by peptide affinity purification.
Conjugation:	Unconjugated
Storage:	Store at -20°C as received.
Stability:	Stable for 12 months from date of receipt.
Gene Name:	EPM2A (laforin) interacting protein 1
Database Link:	NP_055620 Entrez Gene 77781 Mouse Entrez Gene 9852 Human Q7L775
Background:	The function of this protein is unknown.
Synonyms:	FLJ11207; KIAA0766



[View online »](#)

Product images:

EPM2AIP1 Antibody (N-term) (Cat. #TA328142]) western blot analysis in K562 cell line and mouse cerebellum tissue lysates (35ug/lane). This demonstrates the EPM2AIP1 antibody detected the EPM2AIP1 protein (arrow).